



This manual has been prepared for the owners and operators of the ELEVATE by ARMEDICA Hi-Lo Treatment Tables. It contains installation instructions, precautionary instructions and maintenance procedures for the following model numbers:

ELE3 & ELE4



ISO 13485
FM 50089

Made in the U.S.A

This User's Manual is for the following Elevate series tables only

ELE3B – ELEVATE 3 SECTION HI/LO TABLE BLACK

ELE3W – ELEVATE 3 SECTION HI/LO TABLE WHITE

ELE4B – ELEVATE 4 SECTION HI/LO TRACTION TABLE BLACK

ELE4W – ELEVATE 4 SECTION HI/LO TRACTION TABLE WHITE



WARNING: Read and understand this user's manual before installing or using this equipment.
Failure to follow operating and maintenance instructions could result in equipment damage or personal injury.



IMPORTANT: Do not use this manual to reference instructions, requirements or specifications for any product other than those listed in this manual.
Equipment damage, void of warranty and personal injury may occur.

Table of Contents

Models covered in manual and table of contents	2
Symbols and Indicators	3
Definitions	4
Assembly and Installation	6
Operating instructions	7
RF Interference information	8
Maintenance & Troubleshooting	9
Technical specifications	10
Parts list and Drawings	11
Bar Activation Switch	19
Warranty information	20

SYMBOLS and INDICATORS



WARNING: Read and understand the operating instructions listed in this manual before installing or using this equipment.
Failure to follow manufacturer's operating instructions could result in equipment damage or personal injury.



ATTENTION: Important information or instructions.



WARNING: Follow safe lifting procedures and precautions.

WARNING: Identifies electrical shock hazard.



Type B Applied part: An Applied Part complying with the specified requirements to provide protection against electric shock, particularly regarding allowable patient leakage current and patient auxiliary current.



This platform is equipped with a protective earth ground. This device may only be connected to a power source with a protectively earthed ground.



Alternating Current

DEFINITIONS

The Elevate by Armedica series treatment tables are a Class 1 medical device in respect to the use of an earthed ground as a means of protection against electric shock.

Intended use: The Elevate by Armedica series treatment tables are intended for medical rehabilitation purposes and, to be used in conjunction with other forms of exercise, as a patient positioning platform.



CAUTION: Using this device in a manner inconsistent with its labeling will void warranty and, damage to device or personal injury may occur.



CAUTION: This device is not suitable for use in an oxygen rich environment or in the presence of flammable anesthetics. Fire or explosion may occur.

Patient: Any person cleared by a doctor or physical therapist currently using this device as positioning platform under the direction and supervision of a qualified operator.

Operator: Any person/persons who has been trained, qualified and authorized by the consumer or responsible organization to operate this platform.



CAUTION: A patient is not intended to operate this device in any way. The Elevate by Armedica series treatment tables shall be operated by trained, qualified and authorized personnel ONLY.

Service Technician: Any person/persons authorized by Armedica Manufacturing to perform service, component replacement or repair to the Elevate by Armedica series treatment tables.

DEFINITIONS CONTINUED

Duty Cycle: The ratio of time the device can be in a state of continuous actuation (moving) and rest. Noted in units of minutes as ON/OFF. The Duty Cycle of this device is rated for 1(one) minute on / 9(nine) minutes off.


Electrical power source: This device is intended to be connected to an external 100-240VAC \sim , 2,400mA (peak), 50-60Hz electrical power source.



WARNING: To avoid risk of electrical shock, this device must only be connected to a supply mains with protective earth ground.



ATTENTION: The possibility of EMC and/or RF interference may occur in the presence of other devices. If interference is suspected, move this device away from other sensitive devices or contact manufacturer.

Applied part: An applied part is one specifically intended to come into direct contact with patient during normal use. This includes Armedica part #'s (for ELE3) 14812, 14813, and 14814, (for ELE4) 14812, 14501, 14502, and 14503. Applied parts are identified, either in this manual or directly on the part, with this symbol . (Refer to the bill of materials on Pg. 11 for list of parts and descriptions)

Accessible Part: An Accessible Part is any part that the patient or operator may come into direct contact with, either intentional or unintentionally, but direct contact is not required for normal operation.

Operator Interface: The point in which the operator will input data, via momentary push button, for actuation, and device control.

ELEVATE BY ARMEDICA SERIES HI/LO TREATMENT TABLES



WARNING: Read and understand this operator's manual before installing or using this equipment. Failure to follow operating and maintenance instructions could result in equipment damage or personal injury.

INSTALLATION

ALL MODELS



WARNING: 2 people are required to move this equipment. This unit weighs in excess of 200Lbs/90Kgs. Failure to follow safe lifting instructions can result in serious personal injury and/or damage to equipment.



CAUTION: Do not lift or support by upholstered top sections. Damage to equipment or serious personal injury may Occur.

CAUTION: There are no contradictions associated with this device. The emissions characteristics of this device make it suitable for use in industrial areas and hospitals.

1. Remove all packaging material from the tables.
2. There is no assembly required on the Elevate by Armedica Series Treatment Tables.
3. Plug the power cord into a properly grounded 100-240VAC, 50/60Hz outlet and follow the procedure outlined in the Precautionary Instructions.
4. The table is equipped with four total lock swivel casters for maximum stability.
5. The motor is equipped with a thermal cutout that protects it from overheating.



WARNING: Dangerous voltage present.
Do not connect this unit to a power source before reading these instructions. Damage to equipment and/or electrical shock may occur.

WARNING: This device may only be used in a professional healthcare facility where operators with professional medical training are continuously available when patients are present.

OPERATING INSTRUCTIONS

Ensure all four casters are locked and device is stable prior to patient loading, unloading, and during use.

To adjust the height of the Elevate by Armedica Treatment Tables, a foot bar extending the length of the table is used to activate the electric motor assembly. Pressing down on the bar will raise the table. Pulling up on the bar will lower the table.

TABLE SECTION ADJUSTMENTS

The sections of the Elevate by Armedica Treatment Tables are raised by lifting them with both hands. The locking mechanism holds them securely at any angle. To lower a section hold it in one hand and release the locking mechanism by turning the knob with the other.



WARNING: When lowering any of the table sections, make certain that all appendages are clear and away from possible pinch points. Failure to do so may result in serious injury.

WARNING: When adjusting the sections with the patient on the table, be sure that the patient's weight is not on the section you are going to adjust.

WARNING: When the center section is lowered, ensure that the lock is properly engaged.

WARNING: Make sure the arm rest on the 3-piece head section is locked securely in position before the patient places any weight on it.

TABLE SECTION ADJUSTMENTS CONTINUED

1. To adjust the center section on the ELE3, the spring-loaded lock must be released before the section can be raised.
2. To adjust the rolling foot section on the ELE4, rotate the knob to the unlock position. Adjust to desired position and rotate knob to the lock position.
3. To adjust the arm rest on the 3 piece head section, use two hands placed on each end and pull out to the side then raise or lower into the up or down position and release.

PRECAUTIONARY INSTRUCTIONS



ATTENTION: The possibility of EMC and/or RF interference may occur in the presence of other devices. If interference is suspected, move this device away from other sensitive devices or contact manufacturer.

1. This equipment generates, uses and can radiate radio frequency energy and, if not installed and used in accordance with the instructions, may cause harmful interference to other devices in the vicinity. However, there is no guarantee that interference will not occur in a particular installation. If this equipment does cause harmful interference to other devices, which can be determined by turning the equipment off and on, the user is encouraged to try to correct the interference by one or more of the following measures:

Reorient or relocate the receiving device.

Increase the separation between the equipment.

Connect the equipment into an outlet on a circuit different from that to which the other device(s) are connected.

Consult the manufacturer or field service technician for assistance.



CAUTION: Ensure all appendages are clear and away from Any moving parts. Failure to do so may result in serious Personal injury.

CAUTION: Never leave patient unattended while using this device, and children should not be left unattended at any time. Serious injury may occur.

MAINTENANCE

The Elevate by Armedica Treatment Tables are equipped with a maintenance free electric motor. The moving parts of the table should have a drop of mineral oil, or food grade grease, placed on them approximately every six months.

Frequently check to make certain that all hardware (nuts, bolts, etc.) are properly adjusted and securely fastened.

Clean all applied parts with a mild disinfectant prior each patient use.

Clean all surfaces of this device with a damp cloth weekly.

TROUBLESHOOTING

Device fails to lift or lower, refer to the following steps:

1. Verify that the device is connected to an appropriate power source, and supply voltage matches the power requirements specified in this manual.
2. Allow the internal thermal protection to cool.
3. If the device fails to operate, call Armedica customer service at 1-800-701-5122.



CAUTION: All service to this device must be done only by a qualified service technician authorized by Armedica Mfg.



CAUTION: Do not exceed Maximum load capacity. Damage to unit and/or serious injury may occur.



CAUTION: Do not throw in trash. Expected service life of this device is approximately 10 years. Dispose of this device in accordance with local, state and national environmental regulations. Failure to do so may constitute a criminal act.

TECHNICAL SPECIFICATIONS

Manufactured & Assembled by

ARMEDICA Mfg. Corp.
212 Bell rd.
Greenwood, AR, 72936
1-800-751-5122

Environmental Conditions

Operating/storage temp.: 5°C-40°C / 41°F – 104°F
Humidity: 5%-85%
Pressure/Altitude: 700hPa to 1060hPa

Static & Dynamic Load Capacity

Maximum load: 500Lbs/227Kgs

Electrical Specifications

Supply mains input power: 100-240VAC \sim , 50//60Hz
Current: 4,000mA (PEAK)
Secondary output power: 29VDC \equiv , 175VA
Duty cycle: 10% 1min. ON / 9min. OFF

Actuator and control manufactured by:
TiMotion Technologies / TiMotion USA
1535 Center Park Drive
Charlotte, NC., 28217
Tel:(704)708-6924
Email: sales.us@timotion.com

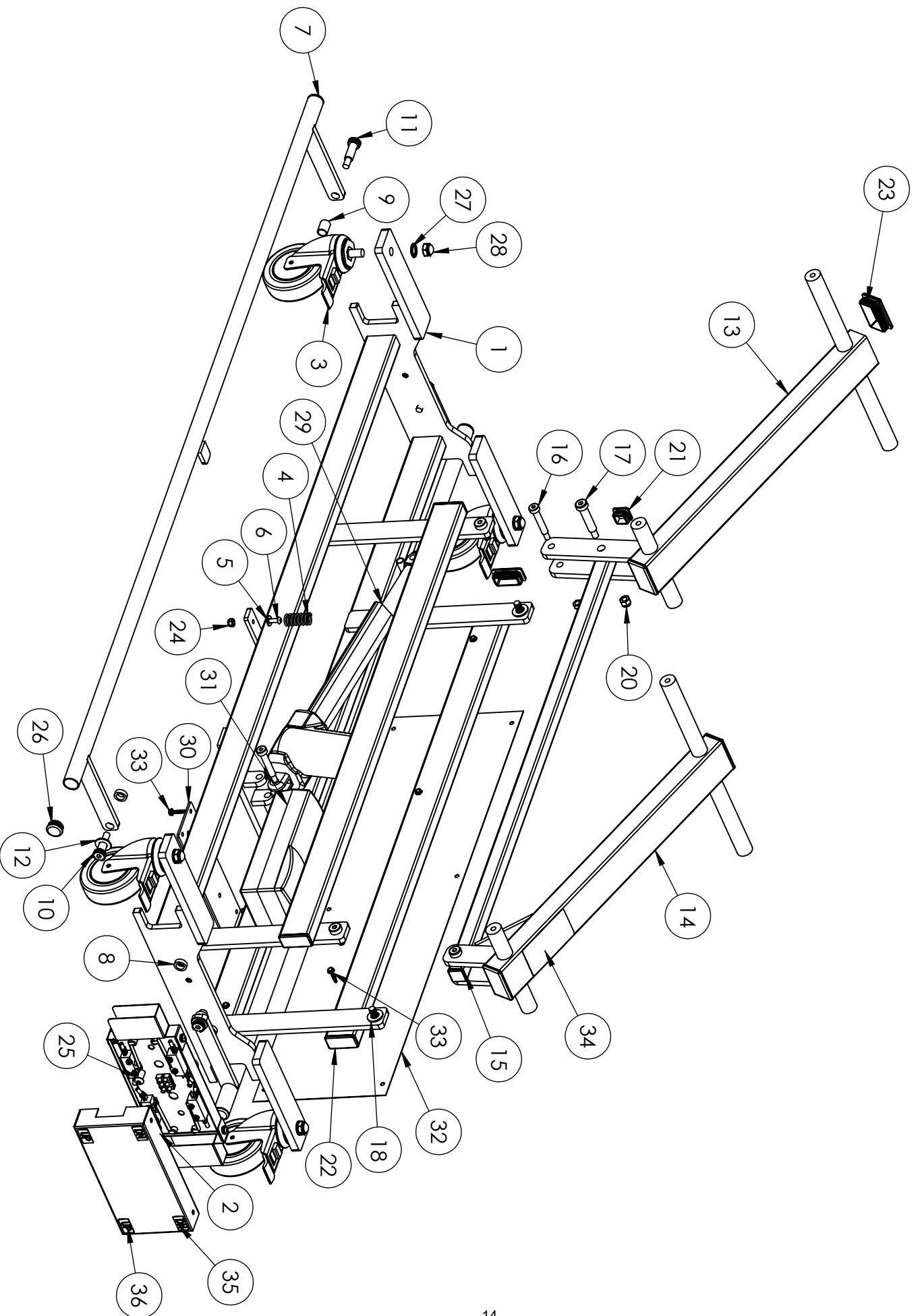
TiMotion Actuator control unit conforms to AAMI Std. ES 60601-1.
Certified to CSA Std. C22.2 NO 60601-1

		ELEVATE ELE SERIES PARTS LIST		
ITEM #	PART #	DESCRIPTION	QTY.	QTY.
			ELE3	ELE4
1	18914	BASE BC 4 CSTR PNTD	1	1
2	19873	BOX BA SWITCH ASSEMBLY TiMo	1	1
3	03178	CASTER DTCAS 4" DUAL LOCK	4	4
4	03429	SPRING COMPRSSN 3/4x1-5/8 ZINC PLTD	2	2
5	02140	WASHER 1/4	2	2
6	02538	SCREW BTN HD SOC 1/4-20x3/4	2	2
7	18927	BAR FT SWITCH BC BASE PNTD	2	2
8	02528	SPACER PLAS .775 ODx.515 IDx.250 RL	4	4
9	02658	SPACER PLAS .870 ODx .527 IDx .875	2	2
10	02645	BOLT SHLDR 1/2x1	2	2
11	02646	BOLT SHLDR 1/2x1-1/4	2	2
12	02165	WASHER NYLON 1/2 ID	6	11
13	18113	LIFTING ARM HEAD UNPNTD	1	1
14	18330	LIFTING ARM BARIATRIC REAR PNTD	1	1
15	18184	CONTROL ROD 1 PC PAINTED	1	1
16	02026	BOLT SHLDR M10x50	2	2
17	02020	BOLT SHLDR 1/2x2	2	2
18	02015	BOLT SHLDR 1/2x1/2	8	8
19	02092	NUT NYLOCK M8-1.25 HEAVY	2	2
20	02110	NUT NYLOCK 3/8-16	2	2
21	03010	PLUG 1x1x14GA	2	2
22	03015	PLUG 1x2x14GA	4	9
23	03020	PLUG 1-1/2x2-1/2x11GA	4	4
24	02100	NUT NYLOCK 1/4-20	2	12
25	02176	SCREW BTN HD SOC 3/8-16X3/4	2	2
26	02657	PLUG RD 1"ODx14-20 GA BLK	4	4
27	02661	WASHER LOC 1/2" INTERNAL TOOTH PLTD	4	4
28	02660	NUT ACORN 1/2-13 NICKEL PLATED	4	4
29	03538	MTR TiM TA1-5B-200415 SX H/L	1	1
30	12090	PLT 1/8x3x9-5/8 TIMO TC1 MNT PNTD	1	1
31	03536	CONTROLLER TiMOTION TC1 5AMP	1	1
32	12075	SHEET METAL 9x33.25x20GA PNL PNTD	2	2
33	02542	SCREW HX WSHR HD #10 x 3/4 SELF TAP	20	20
34	xxxxx	DECAL SERIAL	1	1
35	03425	DECAL FT SWITCH MAT TBL DN	2	2
36	03424	DECAL FT SWITCH MAT TBL UP	2	2
37	18921	FRAME TOP 350 RR PNTD	1	
38	18925	FRAME FOOT SECTION RR PAINTED	1	
39	18115	FRAME HEAD SECTION PAINTED	1	1
40	02162	SPACER PLAS .33 ldx.565 Odx.56	2	2
41	18446	ROD 1/2x11-11/16 HD SEC SPPT PLTD	2	

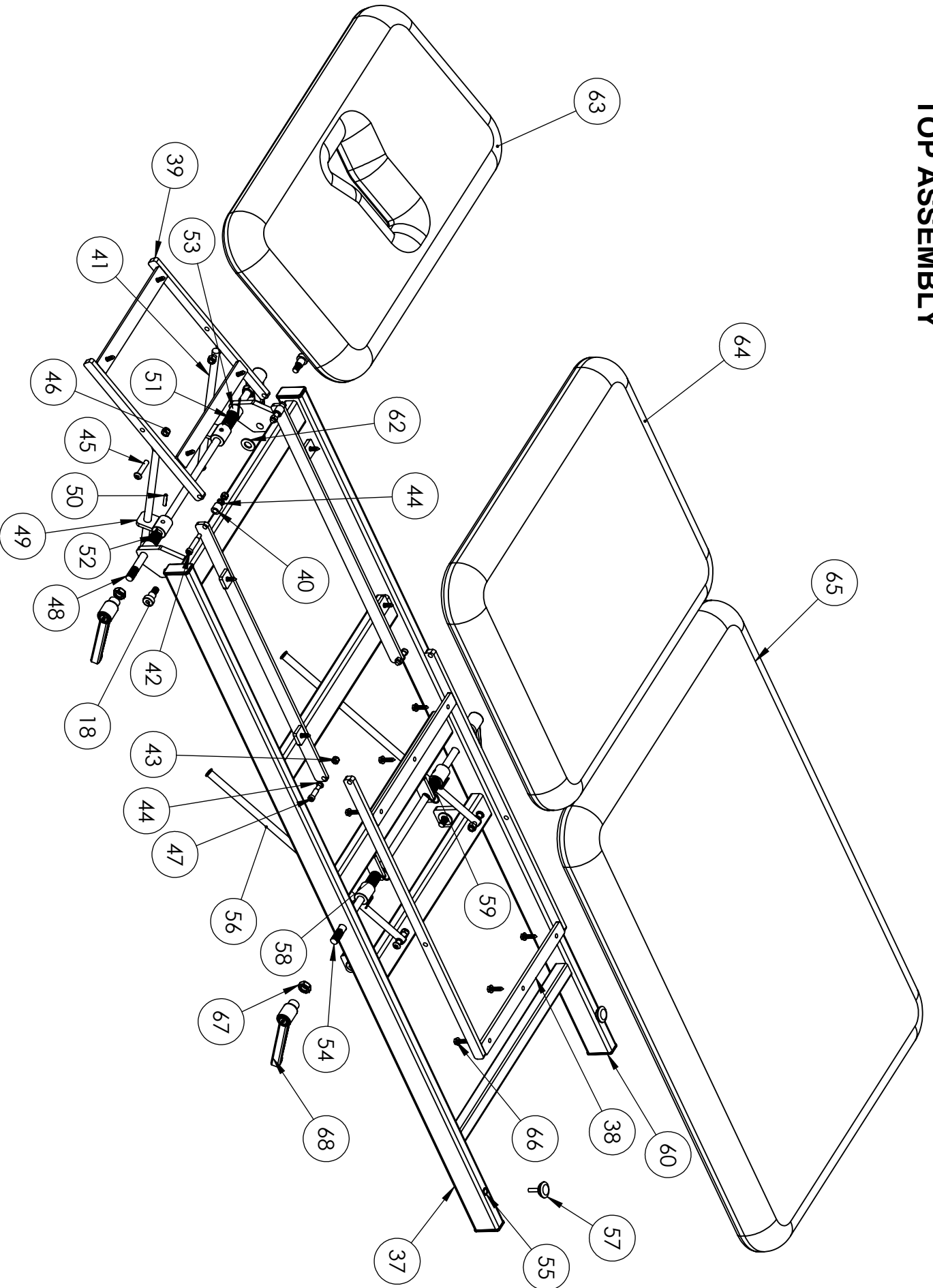
ITEM #	PART #	DESCRIPTION	QTY. ELE3	QTY. ELE4
42	02188	BOLT SHLDR 5/16x1-3/4	2	
43	02100	NUT NYLOCK 1/4-20	4	
44	02160	WASHER NYLON 5/16 ID	8	8
45	02035	SCREW BTN HD SOC 5/16-18x1-1/2	4	4
46	02105	NUT NYLOCK 5/16-18	4	4
47	02005	BOLT SHLDR 5/16-18x3/4	2	4
48	13016	ROD 1/2x21 THD'D HD SEC LOCK PLTD	1	
49	18127	BRKT LOCK SPPT PLTD	4	4
50	02170	PIN SPRING 3/16x1	4	6
51	03030	SPRING TORSION LESS BEND RIGHT	1	1
52	03040	SPRING TORSION LESS BEND LEFT	1	
53	13095	SPACER .913ODx.635 Idx.641 WHT PLASTIC	2	
54	13026	ROD 1/2x23 THD'D FT SEC LK PLTD	1	
55	03080	RIV NUT 1/4-20 14GA	2	
56	18452	ROD 1/2x18 400TRAC FT SEC SPPT PLTD	2	
57	03065	GLIDE 1/4-20x1	2	
58	03025	SPRING TORSION RH	1	1
59	03035	SPRING TORSION LH	1	
60	03015	PLUG 1x2x14GA	4	
62	02165	WASHER NYLON 1/2 ID	4	
63	14812	BD UPH HD SEC 27"WIDE	1	1
64	14813	BD UPH CTR SEC 27" WIDE	1	
65	14814	BD UPH FOOT SEC 27" WIDE	1	
66	02065	SCREW HX WASHER HD #14x1	14	4
67	02135	NUT HX FIN JAM 1/2-13	4	4
68	03374	1/2-13-SW FIXED LEVER PLASTIC	4	2
69	18953	BASE BA TRACTION 400 PNTD		1
70	18494	STAND MACHINE PIVOT BA PAINTED		1
71	03008	PLUG 1x1-1/2		1
72	02090	NUT NYLOCK 1/2-13		1
73	12751	PLATE SX 1/8x6-1/2 STND LOCK PLTD		1
74	02050	SCREW HX HD CAP 5/16-18x1-3/4		2
75	02045	SCREW HX HD CAP 1/4-20x1		14
76	02032	BOLT CARRIAGE 1/2-13x3		1
77	03125	KNOB "T" SPRNG LOAD PULL PIN 1/4DIA		1
79	18512	FRAME TOP 400 TRACTION PAINTED		1
80	03013	CAP .312x4 BLK PLASTIC TUBE		2
81	18516	HANDLE FT BD 400 LK RLSE RT PLTD		1
82	03066	BEARING KILLIAN F300 1/2 ID 1-1/8		4
83	18501	FRAME TOP ROLLER 400 PAINTED		1
84	18506	FRAME FOOT SEC 400 PAINTED		1
85	18496	ROD 1/2x15-3/4 400 FT SEC SPPT PLTD		2
86	02150	WASHER 5/16		4
87	12311	BAR GEAR 1/2SQx7-7/8 AT LOCK PLTD		1

ITEM #	PART #	DESCRIPTION	QTY. ELE3	QTY. ELE4
88	02073	SCREW FLT HD PHIL 1/4-20x1-1/2		2
89	02168	SPACER NYLON .980 ODx.352 IDx1/2		4
90	02101	SCREW PAN HD PHIL 10-32x1		1
91	02099	SCREW PAN HD PHIL 10-32x1-1/4		1
92	12527	BAR 1/8x1-1/4x2-13/16 LOCK LINK PLT		1
93	02089	BAR 1/8x1-1/4x2-13/16 LOCK LINK PLT		1
94	02037	SCREW BTN HD SOC 1/4-20x1		1
95	13526	BUSH CAM .515 ID LOCK MECH PLTD		1
96	18448	ROD 1/2x8-11/16 CTR SEC SPPT PLTD		2
97	12511	BAR 1/8x1x2-3/4 STRAP HOOK 400 PLTD		2
98	13521	ROD 1/2x23 THD'D 400 CAM LOCK PLTD		1
99	03070	ROD 1/2x23 THD'D 400 CAM LOCK PLTD		2
100	14501	BD UPH AM400 18x27 THORACIC		1
101	14502	BD UPH AM400 10x27 LUMBAR		1
102	14503	BD UPH AM400 33x27 FOOT SECTION		1
103	02265	SHT MTL AM-BA SIDE SHIELD PNTD	2	2
104	02207	WASHER SEALED #10x1/2 GALV STEEL	2	2
105	03192	STRAIN RELIEF FT RAIL SWTCH COVER	1	1
106	02252	SCREW PAN HD PHIL 10-24x1/2	2	2
107	02477	PLATE FORMED SWITCH MOUNT 9-3/8	1	1
108	03190	TERM INSUL NYLON FEMALE 22-18GA .25	8	8
109	03263	TERMINAL BLOCK 12 POLE 22-10GA 350V	1	1
110	02647	SPACER PLAS .251 ODx..152 IDx.156	8	8
111	03191	SWITCH LIMIT ROLLER FT RAIL E13-00K	4	4
112	02475	PLT COVER FORMED 1-3/8x4-1/2x9-1/2	1	1
113	03193	RIVET PLAS PUSH FT RAIL COVER BLK	2	2

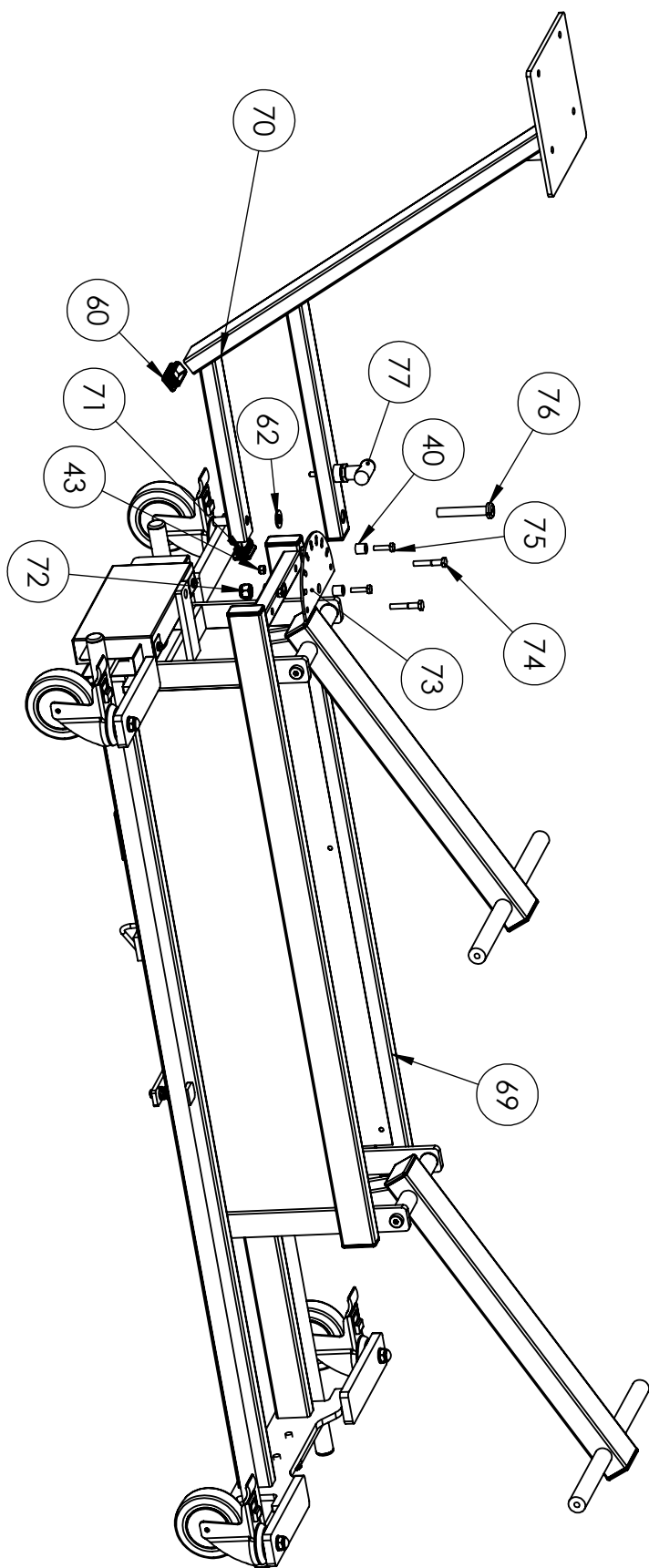
ELE3 BASE ASSEMBLED



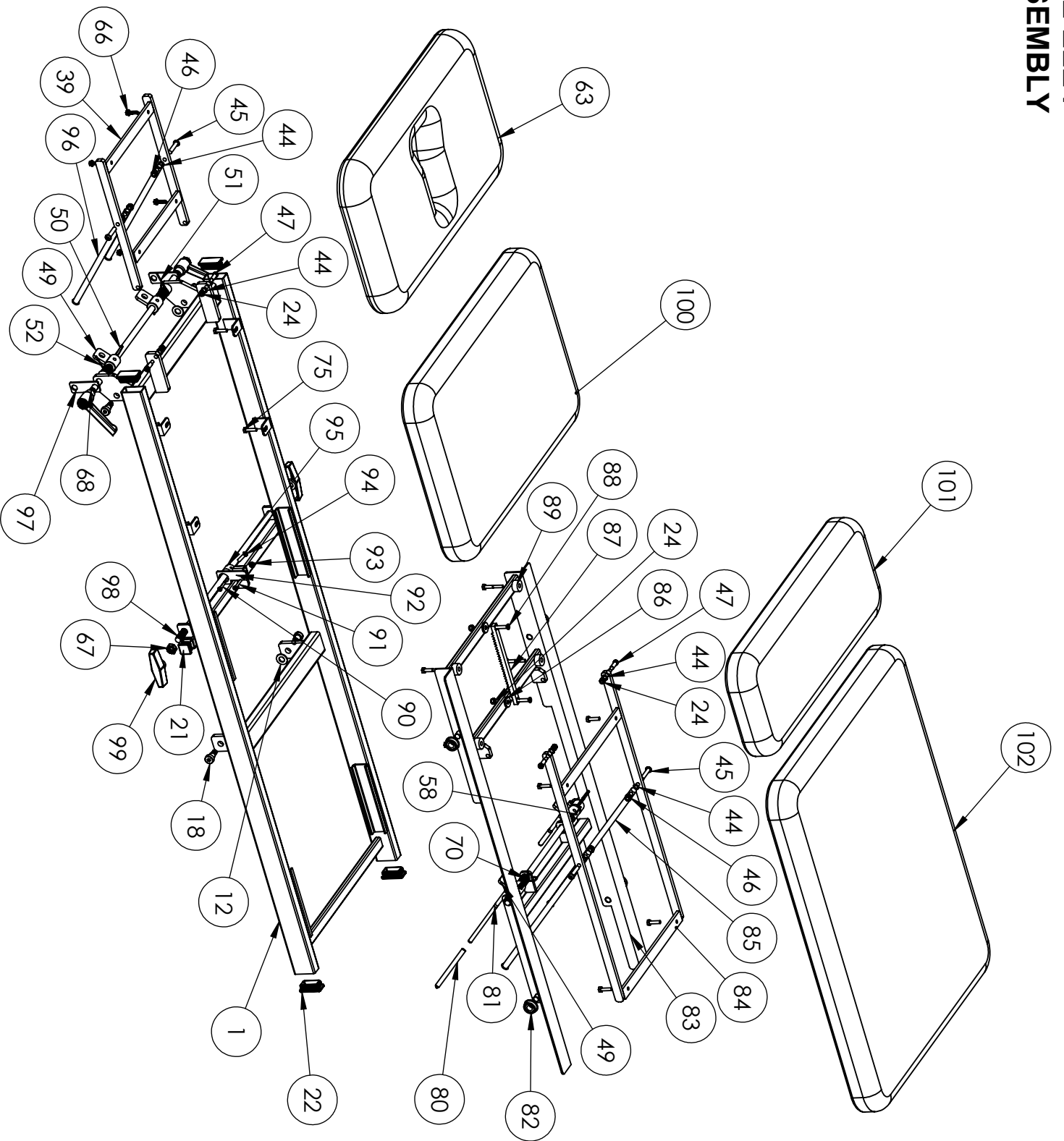
ELEVATE ELE3 TOP ASSEMBLY



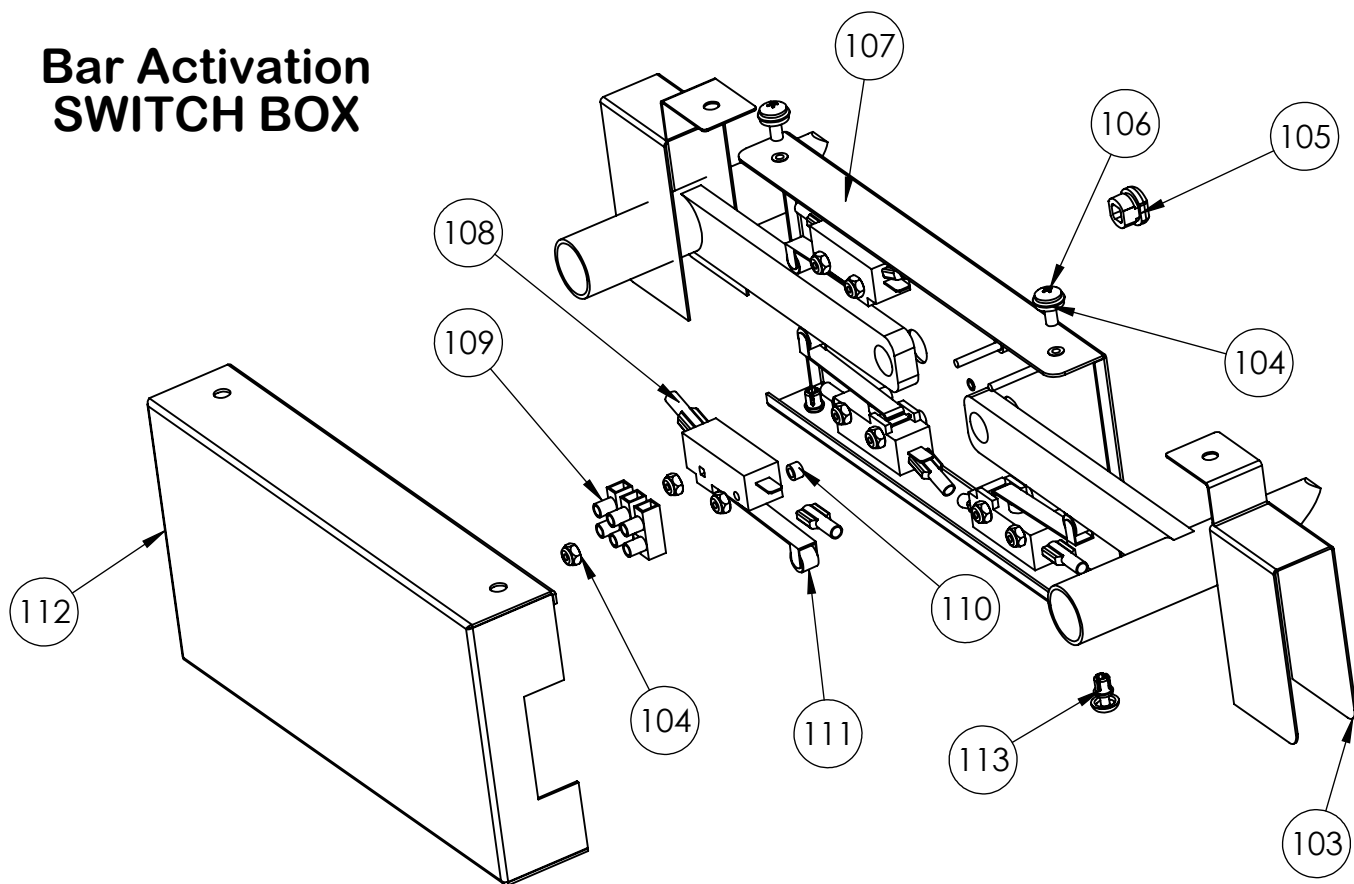
ELE4
BASE ASSEMBLED



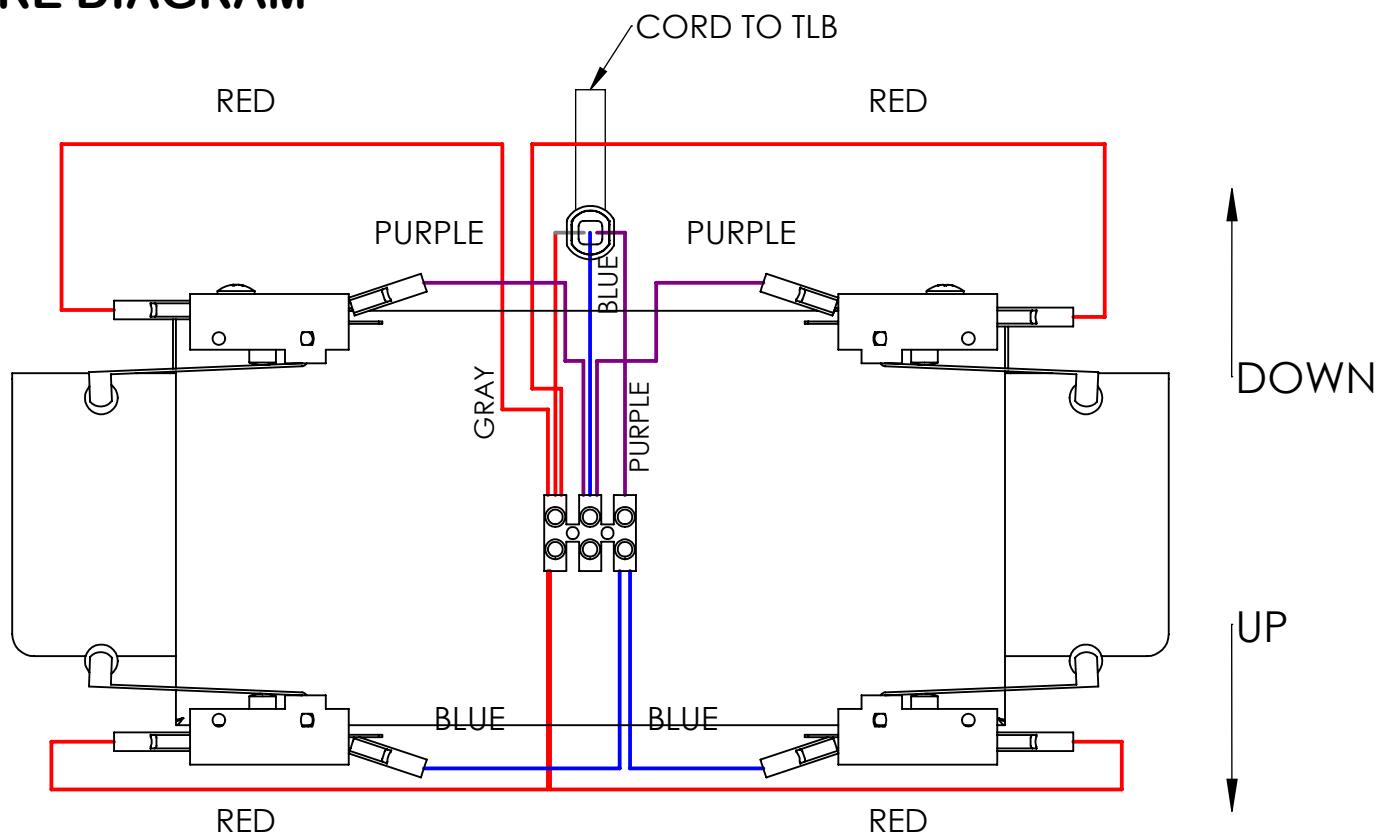
ELEVATE ELE4 TOP ASSEMBLY



Bar Activation SWITCH BOX



WIRE DIAGRAM



MICRO SWITCHES

The bar activated treatment table is equipped with 4 micro switches located in the box mounted on the foot end of the base. The switches are designed to provide years of reliable service. In the rare case that a switch does become inoperative, the box at the end of the table must be accessed. The switches are low voltage and are not a shock hazard. However caution should be used while servicing. The wires connecting the terminals to the switch are light gage and easily damaged. To replace a micro switch, follow these instructions while referring to switch box and wire diagram drawings.

DISCONNECT THE TABLE FROM THE WALL OUTLET BEFORE REMOVING SWITCH

1. Remove the cover plate (49) by removing 2 screws (145) from the top and 2 black plastic reusable rivets (87) from the bottom. Carefully slide the blade of the screw driver under the head of the rivet so damage to the finish does not occur. The head of the rivet will pop up allowing it to be removed. DO NOT DISCARD RIVETS.
2. Using both hands, gently remove cover plate by pulling directly away from mounted switch plate (50).
3. After determining which micro switch is not functioning by pushing or pulling on the foot bar, disconnect the table from the power source.
4. Using a 5/16" wrench remove two nuts (18) from the threaded studs and carefully remove the switch taking care not to damage the wires connected to it.
5. Remove the terminals from the switch by gently tugging on them. DO NOT PULL WIRE.
6. After the micro switch is disconnected, reconnect the replacement switch referring to the wire diagram found in this manual making certain the terminals are securely connected.
7. Once the wire terminals are connected to the replacement switch, make sure the plastic spacers (55) are on the threaded stud prior to reinstalling replacement switch.
8. Replace nuts (18) and securely tighten taking care not to over tighten.
9. Reconnect table to power source and test. Providing the table is operating correctly, replace cover plate ensuring that the side shields (146) are in place and reusing the screws, washers and plastic rivets.

ARMEDICA™ MANUFACTURING CORP.

LIMITED WARRANTY

ARMEDICA™ Manufacturing Corp. warrants that the ELEVATE by ARMEDICA series treatment tables are free from defects in material and workmanship. This warranty shall remain in effect for 18 months from the date of original consumer purchase of the product. If the product fails to function during the warranty period due to a defect in material or workmanship, ARMEDICA™ Manufacturing Corp. or the selling Dealer will repair or replace the unit without charge within a 30 day period from the date on which the unit is returned to ARMEDICA™ Manufacturing Corp. or the selling Dealer. ARMEDICA™ Manufacturing Corp. has a policy of continuous improvement that may result in changes to specifications at any time.

THIS WARRANTY DOES NOT COVER

1. Replacement parts or labor furnished by anyone other than ARMEDICA™, selling dealer or approved ARMEDICA™ service agent.
2. Any failure of the unit during the warranty period if the failure is not caused by a defect in material or workmanship or if the failure is caused by unreasonable use, including the failure to provide reasonable and necessary maintenance.

ARMEDICA™ MANUFACTURING CORP. IS NOT LIABLE FOR INCIDENTAL OR CONSEQUENTIAL DAMAGE TO PROPERTY OR BUSINESS.

To obtain service under this warranty, please do the following:

1. A written claim should be sent to ARMEDICA™ Manufacturing Corp., P.O. Box 880, Greenwood, AR., 72936-0880 or the selling dealer.
2. The device must be returned to ARMEDICA™ Manufacturing Corp. or the selling dealer.
3. This warranty gives you specific legal rights and you may have other rights, which may vary from state to state.
4. ARMEDICA™ Manufacturing Corp. reserves the right to change, modify, or discontinue products and/or parts, at our discretion, without notification.

ARMEDICA™ does not authorize any person or dealer to create for it any other obligations or liabilities in

connection with the sale of the units. Any representation or agreement not contained in this warranty shall be void.

CLASS II ELECTRICAL DEVICE		
IN RESPECT TO PROTECTION AGAINST ELECTRIC SHOCK		
INPUT: 110-240V~, 50/60Hz, 4,000mA, DUTY Cyc: Int. On/Off 1min/9min		
ARMEDICA MFG. CORP.		
Maximum Load: 500Lbs (228Kg.)		
Model No.	Serial No.	Prod. Date
<input type="text"/>	<input type="text"/>	<input type="text"/>
ARMEDICA MFG. 212 BELL RD, GREENWOOD, AR 72936 06331B		
CUSTOMER SERVICE (479) 996-2612		
Medical Electrical Equipment		
with respect to electrical shock, fire, and mechanical hazards only, in accordance to 60601-1		
