



ArmedicaTM
manufacturing corporation

**This manual has been prepared for the owners and operators
of the Armedica DV Series Hi-Lo Treatment Tables.
It contains installation instructions, precautionary instructions
and maintenance procedures for the following model numbers:**

DV-3 & DV-4



ISO 13485
FM 50089

Made in the U.S.A

DV SERIES HI-LO TREATMENT TABLES

*Armedica DV Treatment Tables are intended to be used as physical therapy supports for patients during clinician attended physical therapy related diagnosis, treatment, and monitoring. The table is equipped with a vertical table height adjustment actuator and casters for mobile transport.
Patients are not to be left unattended.*

INSTALLATION

1. Remove all packaging material from the tables.
2. There is no assembly required on the Armedica DV Series Treatment Tables.
3. Plug the power cord into a properly grounded 100-240VAC, 50/60Hz outlet and follow the procedure outlined in the Precautionary Instructions.
4. The table is equipped with four total lock swivel casters for maximum stability.
5. The motor is equipped with a thermal cutout that protects it from overheating.

OPERATING INSTRUCTIONS

To adjust the height of the Armedica DV Treatment Tables, a foot bar extending the length of the table is used to activate the electric motor assembly. Pressing down on the bar will raise the table. Pulling up on the bar will lower the table.

Duty cycle on/off Int. 1 min./ 9 min.

TABLE SECTION ADJUSTMENTS

The sections of the Armedica DV Treatment Tables are raised by lifting them with both hands. The locking mechanism holds them securely at any angle. To lower a section hold it in one hand and release the locking mechanism by turning the knob with the other.

CAUTION: When lowering any of the table sections, make certain that your hands are placed where they cannot come in contact with the board supports.

CAUTION: When adjusting the sections with the patient on the table, be sure that the patient's weight is not on the section you are going to adjust.

To adjust the center section on the DV-3, the spring-loaded lock must be released before the section can be raised.

CAUTION: When the center section is lowered, make sure that the lock is properly engaged.

To adjust the foot section on the DV-4, rotate the knob to the unlock position.

To adjust the arm rest on the 3 piece head section, use two hands placed on each end and pull out to the side then raise or lower into the up or down position and release.

CAUTION: Make sure the arm rest on the 3 piece head section is locked securely in position before the patient places any weight on it.

PRECAUTIONARY INSTRUCTIONS

1. Read, understand and practice the precautionary instructions in this manual. The Versa series treatment table is an adjustable platform to place the patient on for the clinician to diagnose or treat with another modality. Know the limitations and the hazards associated with the Armedica DV Series Treatment Tables.
2. The table is not intended to be used inside an operating room. There may be a risk of explosion if table is used in the presence of flammable anesthetics.
3. This equipment generates, uses and can radiate radio frequency energy and, if not installed and used in accordance with the instructions, may cause harmful interference to other devices in the vicinity. However, there is no guarantee that interference will not occur in a particular installation. If this equipment does cause harmful interference to other devices, which can be determined by turning the equipment off and on, the user is encouraged to try to correct the interference by one or more of the following measures:

Reorient or relocate the receiving device.

Increase the separation between the equipment.

Connect the equipment into an outlet on a circuit different from that to which the other device(s) are connected.

Consult the manufacturer or field service technician for assistance.

4. Always make certain all four casters are locked prior to patient use.
5. Always use both hands when changing the angle of any section of the table.
6. Never change the angle of any section when the patient's weight is on that section.
7. Never place your hands or feet nor the patient's hands or feet near any of the working mechanisms of the table when raising or lowering the table.
8. **Never leave patient unattended.**

MAINTENANCE

The Armedica DV Treatment Tables are equipped with a maintenance free electric motor. The moving parts of the table should have a drop of oil placed on them approximately every six months.

Frequently check to make certain that all hardware (nuts, bolts, etc.) are properly adjusted and securely fastened.

In the event it becomes necessary to replace the activation bar cord or the power cord, make certain that the plug is in properly and the locking tabs on the motor are snapped into place.

The vinyl cover should be cleaned with mild soap and water and the table frame wiped with a dry cloth to remove dust and lint when necessary.

SYMBOLS AND INDICATORS



Attention: Consult accompanying documents.



Type B Equipment: "An adequate degree of protection against electric shock is provided, particularly regarding leakage currents and reliability of the protective earth connection."



The grounding pin located on the power supply cable is for functional use only, and is present for EMI/EMC purposes. The product is Class II equipment and does not rely on this grounding means for safety.

TiMotion Technologies / TiMotion USA 1535 Center Park Drive, Charlotte, NC. 28217 USA.

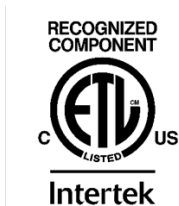
TROUBLE SHOOTING

Model Power supply TC1-5035-001, Actuator Model TA1-5035-001 IP66 protection.

MOTOR DOESN'T WORK.

Rated Voltage and Frequency 100-240VAC, 50/60HZ, 4000mA, Duty

- A. Check to see if motor is plugged into receptacle, and the power cord is properly plugged into the motor. cycle: on/off
Int. 1 min. /
9 min.
- B. Make sure receptacle is getting power.
- C. Check switch cable running from switch box and make sure it is plugged in properly.
- D. Thermal cutout may have activated. Allow the motor to cool.
- E. In the event there is a failure of the motor, the motor must be returned to and serviced by the manufacturer.



MOTOR SPECIFICATIONS



3154358

TiMotion Actuator control unit conforms to AAMI Std. ES 60601-1.

Certified to CSA Std. C22.2 NO 60601-1

Transport and Storage

Ambient Temperature: 5° to 40° C

Relative Humidity: 5% to 85%, including condensation

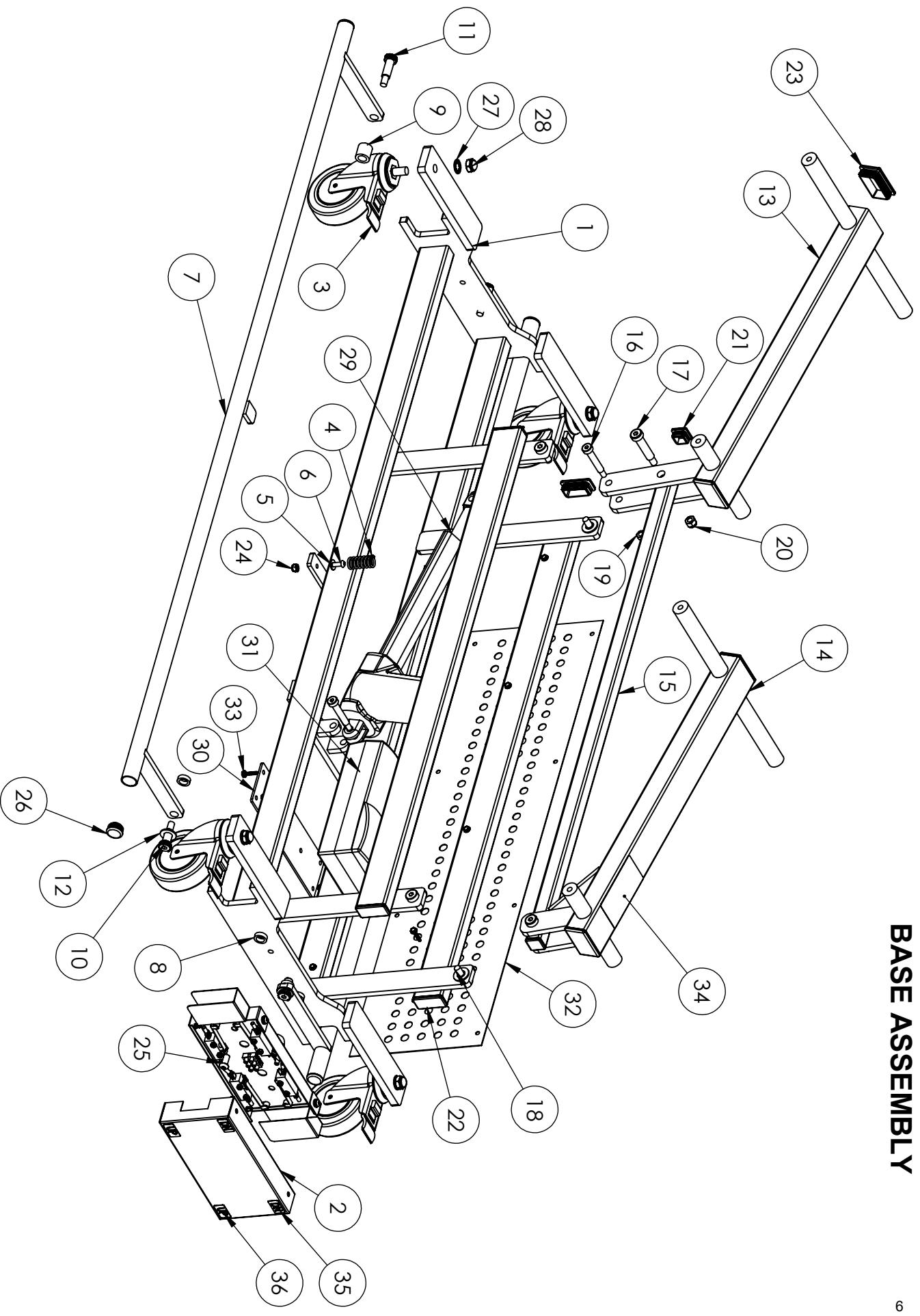
Atmospheric Pressure: 700hPa to 1060hPa

TABLE LIFTING CAPACITY: 500 LBS. (227 KILOGRAMS)

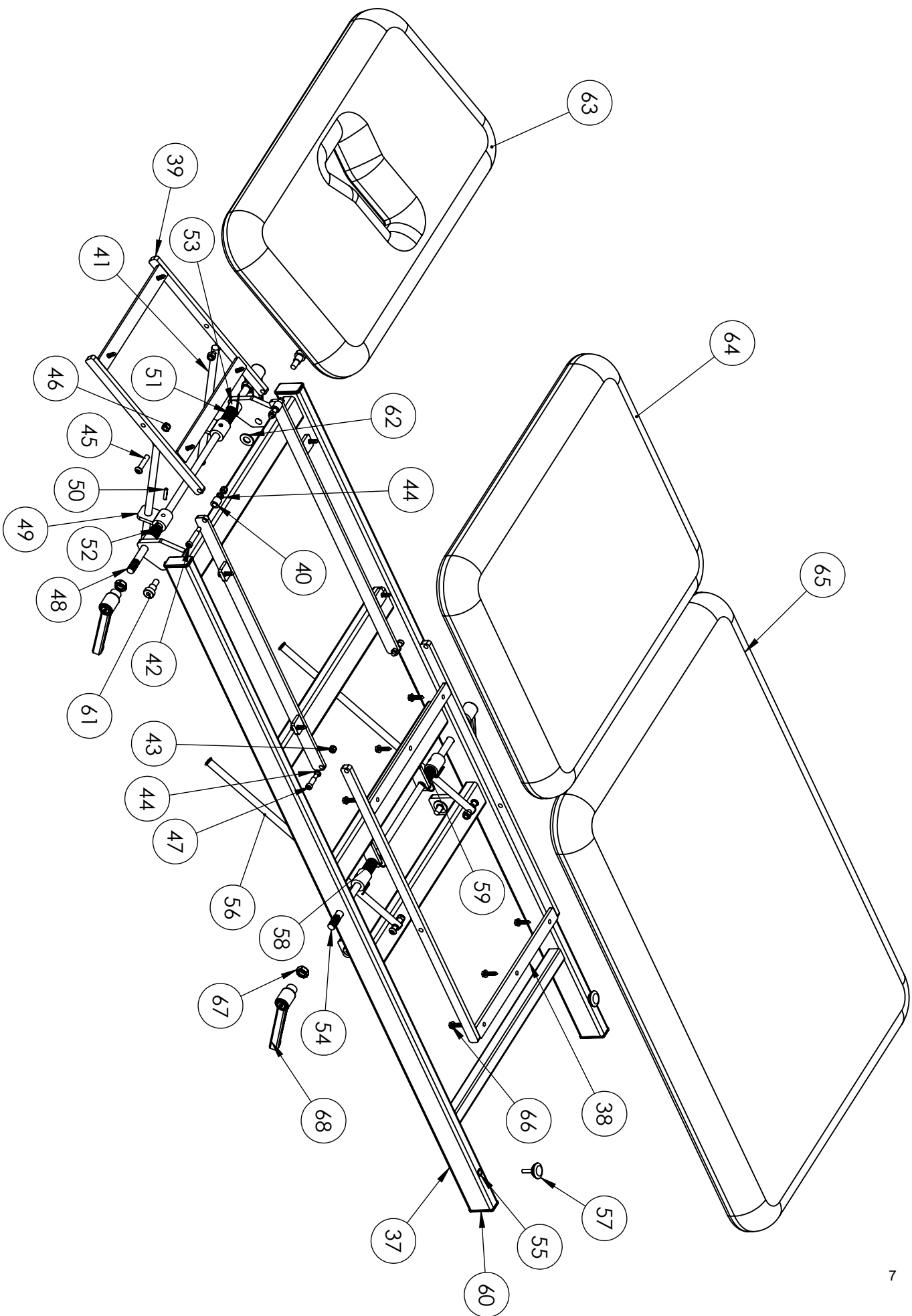
VERSA SERIES PARTS LIST			
ITEM #	PART #	DESCRIPTION	QTY.
1	18914	BASE BC 4 CSTR PNTD	1
2	19873	BOX BA SWITCH ASSEMBLY TiMo	1
3	03178	CASTER DTCAS 4" DUAL LOCK	4
4	03429	SPRING COMPRSSN 3/4x1-5/8 ZINC PLTD	2
5	02140	WASHER 1/4	2
6	02538	SCREW BTN HD SOC 1/4-20x3/4	2
7	18927	BAR FT SWITCH BC BASE PNTD	2
8	02528	SPACER PLAS .775 ODx.515 IDx.250 RL	4
9	02658	SPACER PLAS .870 ODx .527 IDx .875	2
10	02645	BOLT SHLDR 1/2x1	2
11	02646	BOLT SHLDR 1/2x1-1/4	2
12	02165	WASHER NYLON 1/2 ID	6
13	18113	LIFTING ARM HEAD UNPNTD	1
14	18330	LIFTING ARM BARIATRIC REAR PNTD	1
15	18184	CONTROL ROD 1 PC PAINTED	1
16	02026	BOLT SHLDR M10x50	2
17	02020	BOLT SHLDR 1/2x2	2
18	02015	BOLT SHLDR 1/2x1/2	4
19	02092	NUT NYLOCK M8-1.25 HEAVY	2
20	02110	NUT NYLOCK 3/8-16	2
21	03010	PLUG 1x1x14GA	2
22	03015	PLUG 1x2x14GA	4
23	03020	PLUG 1-1/2x2-1/2x11GA	4
24	02100	NUT NYLOCK 1/4-20	2
25	02176	SCREW BTN HD SOC 3/8-16x3/4	2
26	02657	PLUG RD 1"ODx14-20 GA BLK	4
27	02661	WASHER LOC 1/2" INTERNAL TOOTH PLTD	4
28	02660	NUT ACORN 1/2-13 NICKEL PLATED	4
29	03538	MTR TiM TA1-5B-200415 SX H/L	1
30	12090	PLT 1/8x3x9-5/8 TIMO TC1 MNT PNTD	1
31	03536	CONTROLLER TIMOTION TC1 5AMP	1
32	12088	SHEET METAL 9x33.25x20GA PNL PNTD	2
33	02542	SCREW HX WSHR HD #10 x 3/4 SELF TAP	20
34	06331	DECAL SERIAL DYNA DTA	1
35	03425	DECAL FT SWITCH MAT TBL DN	2
36	03424	DECAL FT SWITCH MAT TBL UP	2
37	18921	FRAME TOP 350 RR PNTD	1
38	18925	FRAME FOOT SECTION RR PAINTED	1
39	18115	FRAME HEAD SECTION PAINTED	1
40	02162	SPACER PLAS .33 Idx.565 Odx.56	2
41	18446	ROD 1/2x11-11/16 HD SEC SPPT PLTD	2
42	02188	BOLT SHLDR 5/16x1-3/4	2

43	02100	NUT NYLOCK 1/4-20	4
44	02160	WASHER NYLON 5/16 ID	8
45	02035	SCREW BTN HD SOC 5/16-18x1-1/2	4
46	02105	NUT NYLOCK 5/16-18	4
47	02005	BOLT SHLDR 5/16-18x3/4	2
48	13016	ROD 1/2x21 THD'D HD SEC LOCK PLTD	1
49	18127	BRKT LOCK SPPT PLTD	4
50	02170	PIN SPRING 3/16x1	4
51	03030	SPRING TORSION LESS BEND RIGHT	1
52	03040	SPRING TORSION LESS BEND LEFT	1
53	13095	SPACER .913ODx.635 ldx.641 WHT PLASTIC	2
54	13026	ROD 1/2x23 THD'D FT SEC LK PLTD	1
55	03080	RIV NUT 1/4-20 14GA	2
56	18452	ROD 1/2x18 400TRAC FT SEC SPPT PLTD	2
57	03065	GLIDE 1/4-20x1	2
58	03025	SPRING TORSION RH	1
59	03035	SPRING TORSION LH	1
60	03015	PLUG 1x2x14GA	4
61	02015	BOLT SHLDR 1/2x1/2	4
62	02165	WASHER NYLON 1/2 ID	4
63	14812	BD UPH HD SEC 27"WIDE	1
64	14813	BD UPH CTR SEC 27" WIDE	1
65	14814	BD UPH FOOT SEC 27" WIDE	1
66	02065	SCREW HX WASHER HD #14x1	14
67	02135	NUT HX FIN JAM 1/2-13	4
68	03374	1/2-13-SW FIXED LEVER PLASTIC	4

BASE ASSEMBLY



DV3 TOP ASSEMBLY



MICRO SWITCHES

The bar activated treatment table is equipped with 4 micro switches located in the box mounted on the foot end of the base. The switches are designed to provide years of reliable service. In the rare case that a switch does become inoperative, the box at the end of the table must be accessed. The switches are low voltage and are not a shock hazard. However caution should be used while servicing. The wires connecting the terminals to the switch are light gage and easily damaged. To replace a micro switch, follow these instructions while referring to switch box and wire diagram drawings.

DISCONNECT THE TABLE FROM THE WALL OUTLET BEFORE REMOVING SWITCH

1. Remove the cover plate (49) by removing 2 screws (145) from the top and 2 black plastic reusable rivets (87) from the bottom. Carefully slide the blade of the screw driver under the head of the rivet so damage to the finish does not occur. The head of the rivet will pop up allowing it to be removed. DO NOT DISCARD RIVETS.
2. Using both hands, gently remove cover plate by pulling directly away from mounted switch plate (50).
3. After determining which micro switch is not functioning by pushing or pulling on the foot bar, disconnect the table from the power source.
4. Using a 5/16" wrench remove two nuts (18) from the threaded studs and carefully remove the switch taking care not to damage the wires connected to it.
5. Remove the terminals from the switch by gently tugging on them. DO NOT PULL WIRE.
6. After the micro switch is disconnected, reconnect the replacement switch referring to the wire diagram found in this manual making certain the terminals are securely connected.
7. Once the wire terminals are connected to the replacement switch, make sure the plastic spacers (55) are on the threaded stud prior to reinstalling replacement switch.
8. Replace nuts (18) and securely tighten taking care not to over tighten.
9. Reconnect table to power source and test. Providing the table is operating correctly, replace cover plate ensuring that the side shields (146) are in place and reusing the screws, washers and plastic rivets.

ARMEDICA MFG. CORP. LIMITED WARRANTY

Armedica Mfg. Corp. warrants that the Versa Series treatment tables are free from defects in material and workmanship. This warranty shall remain in effect for 18 months from the date of original consumer purchase of the product. If the product fails to function during the warranty period due to a defect in material or workmanship, Armedica Mfg. Corp. or the selling Dealer will repair or replace the table without charge within a 30 day period from the date on which the table is returned to Armedica Mfg. Corp. or the selling Dealer.

THIS WARRANTY DOES NOT COVER

1. Replacement parts or labor furnished by anyone other than Armedica Selling Dealer or approved Armedica Service Agent.
2. Any failure of the table during the warranty period if the failure is not caused by a defect in material or workmanship or if the failure is caused by unreasonable use, including the failure to provide reasonable and necessary maintenance.

ARMEDICA MFG. CORP. IS NOT LIABLE FOR INCIDENTAL
OR CONSEQUENTIAL DAMAGE TO PROPERTY OR BUSINESS.

To obtain service under this warranty, please do the following:

1. A written claim should be sent to Armedica Mfg. Corp. 212 Bell Rd./ PO Box 880, Greenwood AR. 72936, 1-800-701-5122 or the selling Dealer.
2. The table must be returned to Armedica Mfg. Corp. or the selling Dealer.
3. This warranty gives you specific legal rights and you may have other rights, which vary from state to state

Armedica Mfg. Corp. does not authorize any person or dealer to create for it any other obligations or liabilities in connection with the sale of the tables. Any representation or agreement not contained in this warranty shall be void.

CLASS II ELECTRICAL DEVICE		
IN RESPECT TO PROTECTION AGAINST ELECTRIC SHOCK		
INPUT: 110-240V ~, 50/60Hz, 4,000mA, DUTY Cyc: Int. On/Off 1min/9min		
ARMEDICA MFG. CORP.		
Model No.	Maximum Load: 500Lbs (228Kg.) Serial No.	Prod. Date
<input type="text"/>	<input type="text"/>	<input type="text"/>
ARMEDICA MFG. 212 BELL RD, GREENWOOD, AR 72936 063318		
CUSTOMER SERVICE (479) 996-2612		
Medical Electrical Equipment		
with respect to electrical shock, fire, and mechanical hazards only, in accordance to 60601-1		
