



This manual has been prepared for the owners and operators of the Armedica by Pivotal Health Solutions AM-SX/AM-BAX Series Hi/Lo Treatment Tables. It contains installation instructions, instructions for use, precautionary information, and maintenance procedures for the following model numbers:

**AM-SX1000, 1060, 1072, 2000, 3000, 3500, 4000, 4500, 5000, 5500
AM-BAX1000, 2000, 3000, 3500, 4000, 4500, 5000, 5400, 5600**



ISO 13485
FM 50089

Made in the U.S.A

This User's Manual is for the following AM-SX & AM-BAX Series Tables only

All **AM-SX** models are equipped with either a foot switch, or hand switch, for main lift actuation.
All **AM-BAX** models use the bar activation system for 360° main lift activation.

- 1000-** Single section top 27"W x 72"L.
- 1060-** Single section top 27"W x 60"L with folding side rails.
- 1072-** Single section top 27"W x 72"L with folding side rails.
- 2000-** Two section top 27"W x 72"L with articulating head section.
- 3000-** Three section top 27"W x 72"L with power elevating center.
- 3500-** Three section top 27"W x 72"L with fixed center.
- 4000-** Four section top traction table 27"W x 72"L.
- 4500-** Six section top traction table with three section head 27"W x 72"L.
- 5000-** Five section top 27"W x 72"L with power elevating center.
- 5400-** Four section top 27"W x 72"L, fixed center with crescent arm rest.
- 5500-** Five section top 27"W x 72"L fixed center.
- 5600-** Five section top 27"W x 72"L fixed center and gas assist foot section.



WARNING: Read and understand this user's manual before installing or using this equipment. Failure to follow operating and maintenance instructions could result in equipment damage or personal injury.



IMPORTANT: Do not use this manual to reference instructions, requirements, or specifications for any product other than those listed in this manual. Equipment damage, void of warranty, and personal injury may occur.

Table of Contents

Models Covered in Manual and Table of Contents.....	1
Symbols and Indicators.....	2
Definitions.....	3
Assembly and Installation.....	5
Operating Instructions.....	6
Maintenance.....	8
Cleaning.....	8
Troubleshooting.....	9
Technical Specifications.....	10
Parts List and Drawings.....	11
Warranty Information.....	29

SYMBOLS and INDICATORS



WARNING: Indicates failure to follow manufacturer's operating instructions could place the patient, and/or operator at risk of harm. Read and understand the operating instructions listed in this manual before installing or using this equipment.



CAUTION: Indicates a general warning.



WARNING: Follow safe lifting procedures and precautions.



WARNING: Identifies warning of electrical shock hazard.



Instructs to follow operating instructions.



Identifies dangerous electrical information.



Type B Applied part: An Applied Part complying with the specified requirements to provide protection against electric shock, particularly regarding allowable patient leakage current and patient auxiliary current.



No. 5019

This device is equipped with a protective earth ground. This device may only be connected to a power source with a protectively earthed ground.



Alternating Current



Direct Current

SYMBOLS and INDICATORS (continued)



Do not climb or allow children to climb on this device.



Do not stand or allow children to stand on this device.



Do not reach or allow children to reach into this device.

DEFINITIONS

The AM-SX/AM-BAX Series Treatment Tables equipped with **Ewellix** actuation system are Class I devices regarding protection against electric shock.

The AM-SX/AM-BAX Series Treatment Tables equipped with **TiMotion** actuation system are Class II devices regarding protection against electric shock.

Class I: Term referring to electrical equipment in which protection against electric shock does not rely on BASIC INSULATION only, but which includes an additional safety precaution in that means are provided for ACCESSIBLE PARTS of metal or internal parts of metal to be PROTECTIVELY EARTHED.

Class II: Term referring to electrical equipment in which protection against electric shock does not rely on BASIC INSULATION only, but in which additional safety precautions such as DOUBLE INSULATION or REINFORCED INSULATION are provided, there being no provision for protective earthing or reliance upon installation conditions.

Intended use: The AM-SX/AM-BAX Series Treatment Tables are intended as a patient positioning aid for physical rehabilitation purposes and, to be used in conjunction with other forms of exercise, as directed, and under the supervision of a professionally trained and licensed physical therapist.



CAUTION: Using this device in a manner inconsistent with its labeling will void warranty and damage to device or personal injury may occur.

Oxygen Rich Environment: Environment in which the concentration of oxygen is:

a) greater than 25 % for ambient pressures up to 110 kPa; or b) the partial pressure of oxygen is greater than 27,5 kPa at ambient pressures exceeding 110 kPa.



CAUTION: This device is not suitable for use in an oxygen rich environment, in the presence of flammable anesthetics, or other flammable agents. Fire or explosion may occur.

DEFINITIONS (continued)

Patient: Any person currently using this device as a positioning platform under the direction and supervision of a qualified medical professional.

Operator: Any medical professional, who has been trained, qualified, and authorized by the consumer or responsible organization to operate this device.



CAUTION: A patient is not intended to operate this device in any way. The AM-SX/AM-BAX Series Treatment Tables shall be operated by trained, qualified, and authorized personnel ONLY.

Service Technician: Any person/persons authorized by Armedica by Pivotal Health Solutions to perform service, component replacement, or repair to the AM-SX/AM-BAX Series Treatment Tables.



CAUTION: Service to controls and actuators must be done by the manufacturer only. In the event of an actuator, or control unit failure, they must be returned to Armedica by Pivotal Health Solutions. All service or repair must be performed by Armedica by Pivotal Health Solutions authorized field service personnel only. For information, contact customer service.

Duty Cycle: The ratio of time the device can be in a state of continuous actuation (moving) and rest. Noted in units of minutes as ON/OFF. The Duty Cycle of this device is rated for 10%. 1 (One) minute on/9 (nine) minutes off.


Electrical Power Source: This device is intended to be connected to an external electrical power source.

For models equipped with TiMotion- 120VAC \sim , 50/60Hz, 5,000mA.

For models equipped with Ewellix- 100-240VAC \sim , 50/60Hz, 3.2A/1.6A.



WARNING: To avoid risk of electrical shock, this device must only be connected to a supply mains with protective earth ground.

Applied Part: An Applied Part is one specifically intended to come into direct contact with patient during normal use. Applied parts are identified, either in this manual or directly on the part, with this symbol . Refer to the bill of materials on **page 11** for list of parts and descriptions.

Accessible Part: An Accessible Part is any part that the patient or operator may come into direct contact with, either intentional or unintentionally, but direct contact is not required for normal operation.

Operator Interface: The point in which the operator will input data via momentary push button for actuation, memory function, and device control.

AMXS/AMBAX Series Hi/Lo Treatment Tables

This device has been inspected, and operated, for 100% functionality by Armedica by Pivotal Health Solutions prior to shipping. The AM-SX/AM-BAX Series Treatment Tables are a plug and play device and do not require any special assembly, installation, or initialization procedures for normal operation.



WARNING: Read and understand this operator's manual before installing or using this equipment. Failure to follow operating and maintenance instructions could result in equipment damage or personal injury.

INSTALLATION

ALL MODELS



WARNING: Two people are required to move this equipment. This unit weighs in excess of 200lbs/90kg. Failure to follow safe lifting instructions can result in serious personal injury and/or damage to equipment.



CAUTION: Do not lift or support by upholstered sections. Damage to equipment or serious personal injury may occur.

CAUTION: All cables must be fully inserted into their appropriate ports in the actuator and/or control. Failure to do so may cause unit malfunction and/or permanent damage to equipment.

CAUTION: There are no contradictions associated with this device. The emissions characteristics of this device make it suitable for use in industrial areas and hospitals.

WARNING: This device may only be used in a professional healthcare facility where operators with professional medical training are continuously available when patients are present.



WARNING: Dangerous voltage present. Do not connect this unit to a power source before reading these instructions. Damage to equipment and/or electrical shock may occur.

AM-SX/AM-BAX OPERATING INSTRUCTIONS

ALL AM-SX/AM-BAX MODELS



WARNING: Ensure operating area is clear, and device is free from obstruction before adjusting height, or individual sections. Serious personal injury and/or damage to equipment may occur.

INTENDED POSITIONS

Operator Position



Patient Position

This device has been inspected, and operated, for 100% functionality by Armedica by Pivotal Health Solutions prior to shipping. The AM-SX/AM-BAX Series Treatment Tables are a plug and play device and do not require any special assembly, installation, or initialization for normal operation.

ADJUSTING THE TABLE HEIGHT

1. Ensure area is clear and table is free of obstruction.
2. To raise the table, press and hold the “UP” button on the hand switch/footswitch.
3. Release the switch when the desired height is achieved.
4. To lower the table, press and hold the “DOWN” button on the hand switch/footswitch.
5. Release the switch when the desired height is achieved.

For Bar-Activated (AM-BAX) models:

1. To raise the table press and hold down on the foot bar.
2. Release the foot bar to the neutral position when desired height is achieved.
3. To lower the table, lift up on and hold the foot bar.
4. Release the foot bar to the neutral position when desired height is achieved.

For models equipped with power elevated center:

1. To elevate the mid-section, press and hold the up-arrow button, located on either side of the center top section.
2. Release the button when desired position is achieved.
3. To lower the mid-section, press and hold the down arrow button, located on either side of the center top section.
4. Release the button when desired position is achieved.

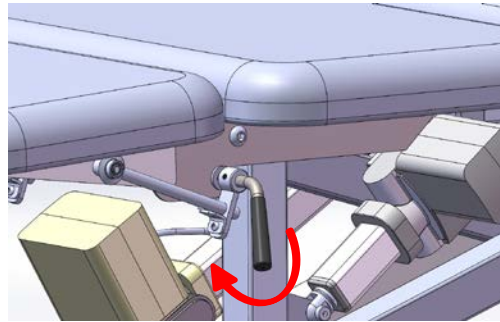
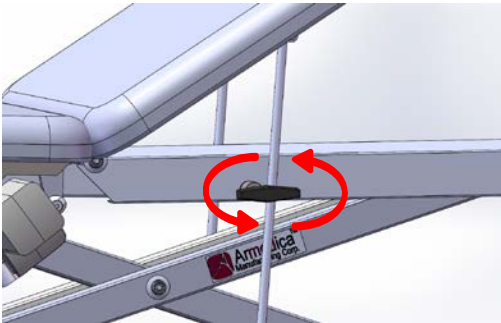
TO ADJUST MANUAL HEAD AND FOOT SECTIONS



WARNING: Any adjustment to a manually operated section must be done with adequate support to that section. Failure to support the section during adjustment can result in damage to equipment and serious personal injury.

All manually adjusted sections employ a mechanical friction locking mechanism, which allows free travel in a single direction, and a continuous lock in the opposite direction.

1. To elevate head and/or foot section, manually lift section into desired position. The section will automatically lock into place.
2. To lower head and/or foot section, support the section and rotate handles as illustrated. Lower section to desired height and release the handle.



FOR MODELS EQUIPPED WITH LOCKING GAS ASSIST

1. To raise the foot section, lift and hold the handle, as illustrated, and the foot section will rise. When in the desired position, release the handle and the springs will automatically lock section in place.
2. To lower foot section, lift and hold the handle to release gas locks, and move foot section down. When in the desired position, release the handle and the springs will automatically lock section in place.



MAINTENANCE



CAUTION: Failure to follow recommended maintenance instructions may cause damage to equipment, personal injury, and void warranty.

Armedica by Pivotal Health Solutions thoroughly inspects and tests each unit to ensure that it meets all Armedica by Pivotal Health Solutions quality standards before it leaves the facility. To ensure the longevity of your device, routine maintenance should be followed.

AFTER FIRST 40 HOURS OF SERVICE

- ✓ Physically inspect all fasteners and hardware are properly secured

DAILY/PRE-USE

The operator should visually inspect the unit prior to each use for;

- ✓ Foreign objects that may interfere with operation or create a hazard to patient
- ✓ Signs of damage to unit and power cord
- ✓ All hardware (nuts, bolts, etc.) is present and properly secured
- ✓ All adjustments are secure
- ✓ Unit functions properly

CLEANING

- Use towel dampened with mild soap and water. Wipe down to remove dust, dirt and spills. Wipe with dry towel to remove moisture.
 - ✓ Upholstered tops
 - ✓ Painted, plated, and plastic surfaces
- Painted or plated components should be cleaned with a commercial disinfectant and wiped with a dry cloth to remove any biological contamination when necessary.



WARNING: This unit is not rated for wash down, it should not be exposed to standing or quantities of liquid. Do not clean any electronic device with water. Electrical shock and/or damage to electronics may occur.

TROUBLE SHOOTING

If this device becomes inoperative, or any problem should occur, remove power from the device and contact Armedica by Pivotal Health Solutions Customer Service at 1(479) 996-2612.



ATTENTION: The AC Mains Cable serves as the **EMERGENCY DISCONNECT DEVICE**. Do not position this device in a manner that would make it difficult to reach the AC mains supply cable. In the event of an emergency, unplug the AC Mains Cable from the external power supply.

WARNING: Disconnect main power to unit before servicing foot bar controls or cables. Electrical shock and/or damage to electronics may occur.

WARNING: Do not alter or modify this device in any way. Altering this device will void all warranties. Serious personal injury and/or damage to equipment may occur.

WARNING: Use only replacement parts approved by Armedica by Pivotal Health Solutions. Failure to do so could result in damage to device, increased emissions, and serious injury.

TECHNICAL SPECIFICATIONS

ENVIRONMENTAL CONDITIONS

Operating/Storage temperature: 5°C to 40°C/41°F to 104°F

Humidity: 5% to 85%

Pressure/Altitude: 700hPa to 1060hPa

GENERAL SPECIFICATIONS

Manufactured and assembled by:

Armedica by Pivotal Health Solutions

Greenwood, Arkansas, 72936, USA

(479) 996-2612

Static and Dynamic Load Capacity

Max operating load: **Timotion** equipped, 400lbs/181kg. **Ewellix** equipped, 500Lbs/227Kgs.



CAUTION: Do not exceed maximum load capacity. Damage to unit and/or serious injury may occur.



CAUTION: Do not throw in trash. Expected service life of this device is approximately 10 years. Dispose of this device in accordance with local, state, and national environmental regulations. Failure to do so may constitute a criminal act.

ELECTRICAL SPECIFICATIONS

Models Equipped with TiMotion Actuation Systems

Main input power requirements:

120VAC \sim

50/60Hz, 5,000mA

Secondary output power:

29VDC --- / 175VA

Duty cycle 10% 2min. on/18min. off

Manufactured by:

TiMotion Technologies/TiMotion USA

1535 Center Park Drive

Charlotte, NC, 28217, USA

(704) 708-6924 or 1-855-235-1424

Email: sales.us@timotion.com

Models equipped with Ewellix Actuation Systems

Main input power requirements:

100-240VAC \sim

50/60Hz, 3.2A

Duty cycle 10% 1min. on/9min. off

Manufactured by:

Ewellix

3519 North Union Dr.

Olney, IL, 62450, USA

(618) 392-3647 or 1-855-235-1424

PARTS LIST									
ITEM NO.	PART NO.	DESCRIPTION	QUANTITY						
			1000	1060	2000	3000	3500	4000	5600
				1072		5000	5400	4500	
1	18856	BASE FRAME SX PNTD	1	1	1	1	1	1	1
2	18862	SX CASTER LEG ASSY W/HOLES PNTD	2	2	2	2	2	2	2
3	18875	ARM SX-BA DUAL LIFT PNTD	1	1	1	1	1	1	1
4	18777	ARM AM-SX PWR SINGLE LIFT UNPNTD	1	1	1	1	1	1	1
5	13879	BUSH SX BRZ .5015x.628x1/4" OILITE	4	4	4	4	4	4	4
6	13855	ROD SX 1/2x8-1/8 X PIVOT PLTD	1	1	1	1	1	1	1
7	02176	SCREW BTN HD SOC 3/8-16X3/4	8	8	8	8	8	8	8
8	02198	SCREW BTN HD SOC 1/2-13x3/4	4	4	4	4	4	4	4
9	02340	SX SLIDE BLOCK PLAS	4	4	4	6	4	4	4
10	03072	CASTER SWIVEL LOK TENTE	4	4	4	4	4	4	4
11	02715	SCREW SET #12-24x1/2 SOC HD	8	8	8	8	8	8	8
12	02665	SCREW BTN HD SOC 7/16-14x1	4	4	4	4	4	4	4
13	02663	WASHER LOC 7/16" INTERNAL TOOTH PLT	4	4	4	4	4	4	4
14	02664	NUT ACORN 7/16-14 NICKEL PLATED	4	4	4	4	4	4	4
15	02196	CAP AXEL NUT STYLE 1/2"	2	2	2	2	2	6	6
16	03605	MOTOR MAX74 8KN 120-240VAC	1	1	1		1	1	1
17	03106	SWITCH FT MAX74 8000N	1	1	1		1	1	1
18	03113	SWITCH HAND MAX65 (OPTIONAL)							
19	02012	BOLT SHLDR M10x30	2	2	2	4	2	2	2
20	02092	NUT NYLOCK M8-1.25 HEAVY	2	2	2	4	2	2	2
21	18770	BASE FRAME SX-BA PNTD(BA option only)	1	1	1	1	1	1	1
22	18772	BAR FT SWITCH SX-BA BASE PNTD	2	2	2	2	2	2	2
23	02646	BOLT SHLDR 1/2x1-1/4	2	2	2	2	2	2	2
24	02645	BOLT SHLDR 1/2x1	2	2	2	2	2	2	2
25	19020	PLATE FRMD SWITCH MNT ASSEMBLED	1	1	1	1	1	1	1
26	02252	SCREW PAN HD PHIL 10-24x1/2	2	2	2	2	2	2	2
27	02207	WASHER SEALED #10x1/2 GALV STEEL	2	2	2	2	2	2	2
28	03192	STRAIN RELIEF FT RAIL SWTCH COVER	1	1	1	1	1	1	1
29	02265	SHT MTL AM-BA SIDE SHIELD PNTD	2	2	2	2	2	2	2
30	02647	SPACER PLAS .251 ODx.152 IDx.156	8	8	8	8	8	8	8
31	03191	SWITCH LIMIT ROLLER FT RAIL E13-00K	4	4	4	4	4	4	4
32	02077	NUT NYLOCK 6-32	4	4	4	4	4	4	4
33	02528	SPACER PLAS .775 ODx.515 IDx.250 RL	4	4	4	4	4	4	4
34	03263	TERMINAL BLOCK 12 POLE 22-10GA 350V	1	1	1	1	1	1	1
35	02076	SCREW PAN HD PHIL 6-32x1/2	1	1	1	1	1	1	1
36	02165	WASHER NYLON .518 IDx1"ODx.08	2	2	2	2	2	3	3
37	02100	NUT NYLOCK 1/4-20	2	2	2	2	2	14	14
38	02140	WASHER 1/4	2	2	2	2	2	6	8
39	02538	SCREW BTN HD SOC 1/4-20x3/4	2	2	2	2	2	2	2
40	03429	SPRING COMPRSSN 3/4x1-5/8 ZINC PLTD	2	2	2	2	2	2	2
41	02657	PLUG RD 1"ODx14-20 GA BLK	4	4	4	4	4	4	4
42	02662	SPACER PLAS .620 ODx .504 IDx 13/16	2	2	2	2	2	2	2
43	02312	FRM SX TOP 1 PC PNTD	1						
44	14823	BD UPH SX100 27X76 W/FACE HOLE	1						
45	14855	BD UPH AMSX CHANGING TABLE 25x60		1					
46	14851	BD UPH SX CHNG TBL 25x72		1					
47	02045	SCREW HX HD CAP 1/4-20x1	8	8	12	14	16	26	26
48	02310	FRM SX3500 11GA TOP PNTD			1		1		
49	02308	FRM SX HD SHT MTL PNTD			1	1	1	1	1
50	18877	ROD SX 1/2"RDx8 HD SEC SPPT PLTD			2	2	2	2	2
51	13867	ROD SX 1/2x15-1/8 HD PVT SPPT PLTD			1	1	1	1	1
52	03040	SPRING TORSION LESS BEND LEFT			1	2	2	1	1
53	03030	SPRING TORSION LESS BEND RIGHT			1	2	2	1	1

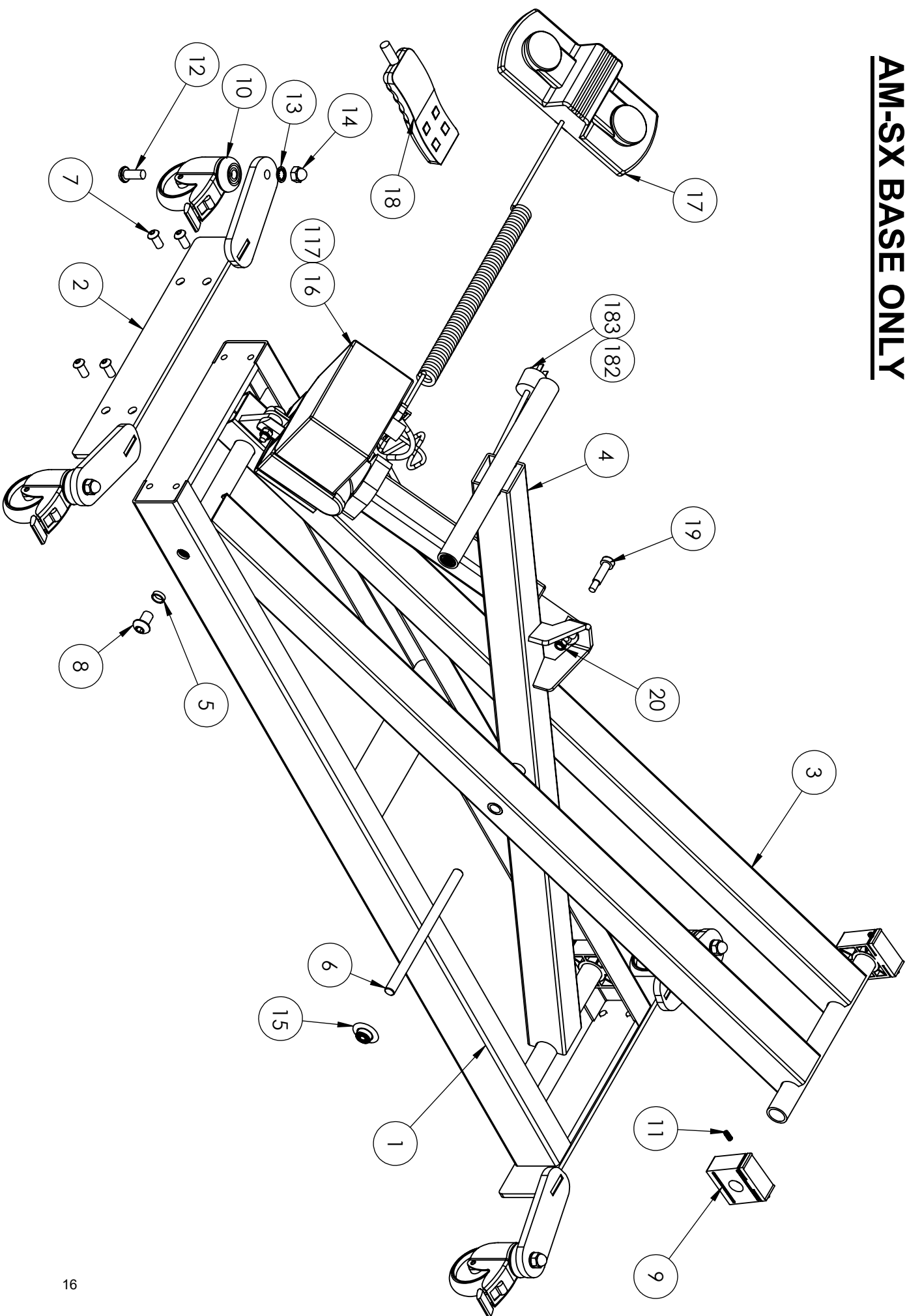
PARTS LIST								
ITEM NO.	PART NO.	DESCRIPTION	QUANTITY					
			1000	1060	2000	3000	3500	4000
				1072		5000	5400	4500
54	13865	TUBE SXDT 3/4x6 LOCK SLEEVE PLT			1	1	1	2
55	02553	BUSH PLAS FLNG .687ODx.510 ID			2	4	4	4
56	02196	CAP AXEL NUT STYLE 1/2"			4	6	4	
57	13877	ROD SX 1/2x13.5 HD SEC PVT PLTD			1	1	1	1
58	02534	PIN SPRING 3/16x3/4			2	2	4	4
59	13946	ROD 1/2x11-13/16 BNT SX LK PLTD			2	2	2	2
60	03464	CAP PLAS TUBE BLK .500x3			2	2	4	2
61	02543	PIN SPRING 3/16x1-1/2			2	2	4	2
62	02165	WASHER NYLON .518 IDx1"ODx.08			2	2		2
63	18787	BRKT LOCK SX 3PC HD SUPPT PLTD			2	2	2	2
64	02170	PIN SPRING 3/16x1			2			2
65	02339	SX LOCK TAB			2	2	4	
66	02036	SCREW BTN HD SOC 1/4-20x3/8 S.S.			2	2	4	4
67	14826	BD UPH 200 BODY 27"			1			
68	14835	BD UPH SX HD 27" WIDE			1	1	1	1
69	18866	SX MID LIFT FRAME ASSY PNTD			1	1		1
70	18869	FRAME SX3000 MID LIFT FOOT PNTD			1	1		
71	18900	ARM MIDLIFT CNTR WELDED PNTD			1	1		
72	18902	HINGE MIDLIFT FT BD PLTD			1	1		
73	03154	MOTOR MAX30 4000Nx50MM 24VDC				1		1
74	13884	ROD 1/2x20-1/4 SXML TOP PIVOT PLTD				1		
75	13026	ROD 1/2x23 THD'D FT SEC LK PLATED				1		
76	13871	ROD SX FT SPPT W/BEND PLTD				2	2	2
77	18127	BRKT LOCK SUPPORT PLATED				2		
78	28354	SX FT SEC SPPT PVT PLTD				2	2	2
79	02135	NUT HX FIN JAM 1/2-13				2		2
80	03070	KNOB WING 1/2X13 ID				2		2
81	14836	BD UPH SX 3000 CTR 27" WIDE				1		
82	14837	BD UPH SX 3000/5000 FOOT 27" WIDE				1		
83	02037	SCREW BTN HD SOC 1/4-20x1				4	4	4
84	03038	SWITCH CONTROL MNTD PWR MAT				2		
85	18854	HANDL LOC BAR BENT AMSX DRIL PLT					2	
86	02503	RETAINER RING 1/2 EXTERNAL				2	2	6
87	02063	SCREW HX WASHER HD #10x3/4					4	4
88	02327	HINGE BENT 2.5x4					2	2
89	14711	BD UPH SX 3500 CTR 27" WIDE					1	
90	14713	BD UPH SX 3500 FT 27" WIDE					1	
91	02318	FRM SX TOP TRACTION PNTD						1
92	18851	FRM SX ROLLER W/CHANNEL PNTD						1
93	12743	BAR SX 1/8x1.5x7-5/8 TX ELBOW PNTD						1
94	13869	ROD SX 1/2x14.563 TX RLLR AXLE PLTD						1
95	02330	WHEEL SX TRACTION ROLLER FRM						1
96	18879	ROD SXDT THD'D FT LOCK BAR PLTD						1
97	02060	SCREW FLT HD PHIL 1/4-20x1/2						
98	02332	ANGLE SX RLLR FRM LOCK MNT PNTD						1
99	13875	BAR SX 5/16HXx23-7/8 RLLR LOCK PLTD						1
100	02501	SCREW PAN HD PHIL 10-32x1/2						4
101	03029	LATCH SOUTHCO						1
102	02089	NUT NYLOCK 10-32						4
103	02185	SCREW FLT HD PHIL 1/4-20x2						2
104	03084	NUT ROUND FLANGED 1/4-20x7/8 BARREL						2
105	02120	NUT HX FIN 1/4-20						4
106	03027	SPRING EXTNSN DECOMP .490x8x.060						2

PARTS LIST									
ITEM NO.	PART NO.	DESCRIPTION	QUANTITY						
			1000	1060	2000	3000	3500	4000	5600
				1072		5000	5400	4500	
107	02073	SCREW FLT HD PHIL 1/4-20x1-1/2						2	
108	14840	BD UPH SX4000 18x27 THORACIC						1	
109	14841	BD UPH SX4000 13x27 LUMBAR						1	
110	14842	BD UPH SX4000 27x31 FOOT						1	
111	03125	KNOB "T" SPRNG LOAD PULL PIN 1/4DIA						3	
112	02111	NUT HX FIN JAM 5/16-18						2	
113	28038	BRKT MACH STND MNT SX PNTD						1	
114	12751	PLATE SX 1/8x6-1/2 STND LOCK PLTD						1	
115	02050	SCREW HX HD CAP 5/16-18x1-3/4						2	
116	02162	SPACER PLAS .33 IDx.565 ODx.56						2	
117	02105	NUT NYLOCK 5/16-18						2	
118	03008	PLUG 1x1-1/2						6	
119	18494	STAND MACHINE PIVOT BA PAINTED						1	
120	03015	PLUG 1x2x14GA						1	
121	02090	NUT NYLOCK 1/2-13						1	
122	14508	BD PLY 400 ADAPT FORMICA 3/4x10						1	
OPTIONAL ACCESSORIES AVAILABLE ON SOME MODELS									
SIDE RAILS									
123	28461	FRAME SX SIDE RAIL UNIVERSAL PNTD	2	2	2				
125	18995	BRKT SIDE RAIL PIVOT MNT LR PNTD	1	1	1				
126	18980	BRKT SIDE RAIL PIVOT MOUNT RR PNTD	1	1	1				
127	18998	BRKT SIDE RAIL PVT LOCK MNT LF PNTD	1	1	1				
128	18982	BRKT SIDE RAIL PVT LOCK MNT RF PNTD	1	1	1				
129	14859	BD UPH SX CHNG TBL SIDE RAIL	2	2	2				
130	02037	SCREW BTN HD SOC 1/4-20x1	4	4	4				
131	02045	SCREW HX HD CAP 1/4-20x1	8	8	8				
132	02104	WASHER 1/4" INTERNAL TOOTH LOCK	4	4	4				
133	02657	PLUG RD 1"ODx14-20 GA BLK	4	4	4				
134	02190	WASHER FENDER 1/4IDx1-1/4OD	2	2	2				
135	02036	SCREW BTN HD SOC 1/4-20x3/8 S.S.	2	2	2				
136	03126	KNOB SPRNG LOAD PULL PIN 3/8 DIA	2	2	2				
3-PIECE HEAD SECTION									
137	02553	BUSH PLAS FLNG .687ODx.510 ID				2	2	2	2
138	03464	CAP PLAS TUBE BLK .500x3				2	2	2	2
139	13910	BAR RD 1/2x11-13/16 SX 3PC HD PLTD				2	2	2	2
140	18783	BAR RD 1/2x11-13/16 SX 3PC HD PLTD				1	1	1	1
141	12300	BAR 1/4x1x1 AM100 RAIL SPCR UNPLTD				6	6	6	6
142	03010	PLUG 1x1x14GA				4	4	4	4
143	18779	BRKT ARM REST RIGHT PNTD				1	1	1	1
144	18787	BRKT LOCK SX 3PC HD SUPPT PLTD				2	2	2	2
145	02339	SX LOCK TAB				2	2	2	2
146	02036	SCREW BTN HD SOC 1/4-20x3/8 S.S.				2	2	2	2
147	03167	KNOB 5/16-18 1/2" L BLACK 1 3/4"				2	2	2	6
148	02196	CAP AXEL NUT STYLE 1/2"				2	2	2	2
149	18877	ROD SX 1/2"RDx8 HD SEC SPPT PLTD				2	2	2	2
150	02165	WASHER NYLON .518 IDx1"ODx.08				2	2	2	2
151	13908	BAR RD 1/2x12 SX 3PC HD PLTD				1	1	1	1

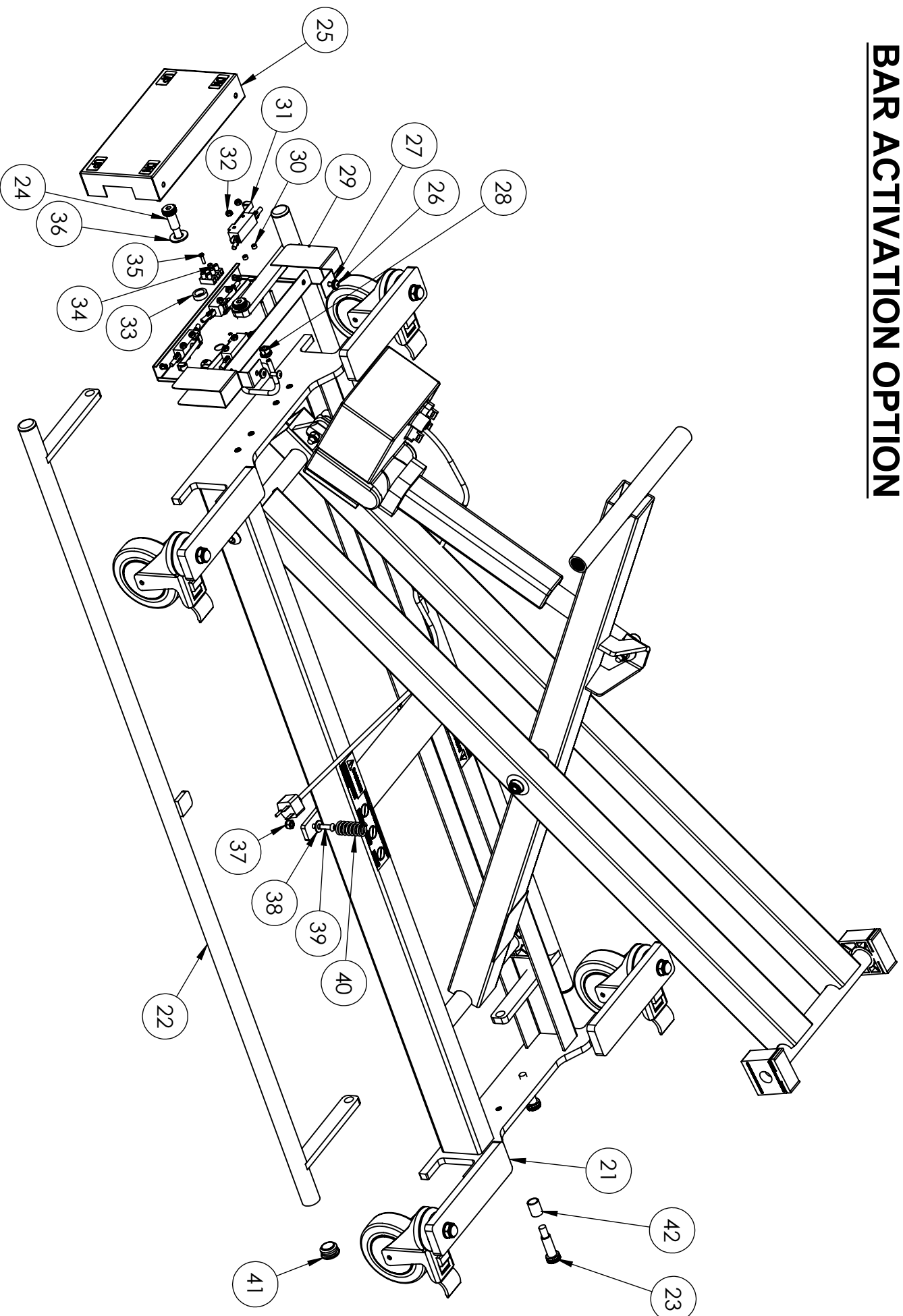
PARTS LIST									
ITEM NO.	PART NO.	DESCRIPTION	QUANTITY						
			1000	1060	2000	3000	3500	4000	5600
				1072		5000	5400	4500	
OPTIONAL ACCESSORIES AVAILABLE ON SOME MODELS									
3-PIECE HEAD SECTION									
152	18785	FRAME SX 3 PC HD SEC PNTD				1	1	1	1
153	18781	BRKT ARM REST LEFT PNTD				1	1	1	1
154	14774	BD UPH SX 3 SEC ARM				2	2	2	2
155	14773	BD UPH SX 3 SEC HD				1	1	1	1
5400 CRESENT HEAD SECTION									
156	02553	BUSH PLAS FLNG .687ODx.510 ID				2	2	2	
157	13910	BAR RD 1/2x11-13/16 SX 3PC HD PLTD				2	2	2	
158	13894	BAR RD 1/2 DIAx7-1/4 SX 3PC HD PLTD				1	1	1	
159	18944	TUBE LOCKING SX 3PC HD PLTD				1	1	1	
160	18898	TUBE LOCK SPPT SX 2PC HD PLTD				1	1	1	
161	18951	FRAME SX 2PC HEAD SECTION PNTD				1	1	1	
162	03464	CAP PLAS TUBE BLK .500x3				2	2	2	
163	02165	WASHER NYLON .518 IDx1"ODx.08				2	2	2	
164	03040	SPRING TORSION LESS BEND LEFT				1	1	1	
165	02196	CAP AXEL NUT STYLE 1/2"				4	4	4	
166	02534	PIN SPRING 3/16x3/4				2	2	2	
167	02548	KNOB W/STEM 1/4-20x1				2	2	2	
168	02045	SCREW HX HD CAP 1/4-20x1				4	4	4	
169	14767	BD UPH SX CRESCENT ARM REST				1	1	1	
170	14762	BD UPH SX HD 3 PC				1	1	1	
BAR ACTIVATION BOX									
171	02478	PLATE FORMED SWITCH MOUNT 9-3/8	1	1	1	1	1	1	1
172	03190	TERM INSUL NYLON FEMALE 22-18GA .25	8	8	8	8	8	8	8
173	03283	CABLE MAX65 FT BAR CONTROL 2.55M	1	1	1	1	1	1	1
174	02475	PLT COVER FORMED 1-3/8x4-1/2x9-1/2	1	1	1	1	1	1	1
175	02265	SHT MTL AM-BA SIDE SHIELD PNTD	2	2	2	2	2	2	2
176	03193	RIVET PLAS PUSH FT RAIL COVER BLK	2	2	2	2	2	2	2
TiMOTION EQUIPPED BASE									
177	03538	MTR TiM TA1-5B-200415 SX H/L							
178	28777	ARM AMTM-SX 2x2 PWR SNGL LFT PNTD	1	1	1	1	1	1	1
179	28775	ARM AMTM-SX DUAL LIFT PNTD							
180	13126	BAR RD 1/2x3-3/4 SM CTR PVT PIN PLTD							
181	03536	CONTROLLER TiMOTION TC1 5AMP	1	1	1	1	1	1	1
182	03538	MTR TiM TA1-5B-200415 SX H/L	1	1	1	1	1	1	1
183	19873	BOX BA SWITCH ASSEMBLY TiMo							
184	03537	FT SWITCH TFS-5035-001				1			1
185	02686	BOLT SHLDR M10X55							
AM-BAX5600									
186	14778	BD UPH PM-BAX5600 KNEE PAD							1
187	21021	TUBE 1x1x14GAx18 KNEE UPRIGHT PLTD							1
188	28089	FRAME SX MID LIFT FT PELV HLTH PNTD							1
189	28348	BRKT SPRNG RLS MNT AMSX5600 PNTD							1
190	12863	BAR 1/2x11/16x2-1/4 SPRNG LCK PLTD							2
191	13934	BAR RD 3/8x37 SPRNG RLS HNDL PNTD							1
192	03173	PIN HITCH CLIP 1/16X1-3/16							4
193	02685	SPRING GAS 100N LOCKING BLACK							2
194	03297	HANDLE ADJ 1/4-20 I.D.x 2.48 LONG							2
195	02619	WASHER LOCK SERRATED 1/4"							4
196	28085	BRKT KNEE SUPPORT SLIDE PNTD							2
197	28087	BRKT KNEE SUPPORT HOLDER PVT PNTD							2
198	22027	BAR 3/8x1-1/2x30 CHNL TRACK PLTD							2
199	02256	SCREW FLT HD PHIL 5/16-18x1 ZINC							2
200	02684	SCREW BTN HD SOC 5/16-18x3/4							2
201	02509	SCREW SET 1/4-20X1/2 CONE POINT							2
202	18902	HINGE MIDLIFT FT BD PLTD							2
203	03368	PIN CLEVIS 5/16x1 ZINC							2

PARTS LIST									
ITEM NO.	PART NO.	DESCRIPTION	QUANTITY						
			1000	1060	2000	3000	3500	4000	5600
				1072		5000	5400	4500	
AM-BAX5600									
204	02169	PIN CLEVIS 3/8x1-3/4							2
205	14875	BD UPH BAX5600 FOOT 28" WIDE							1
206	14874	BD UPH BAX5600 CTR 28" WIDE							1

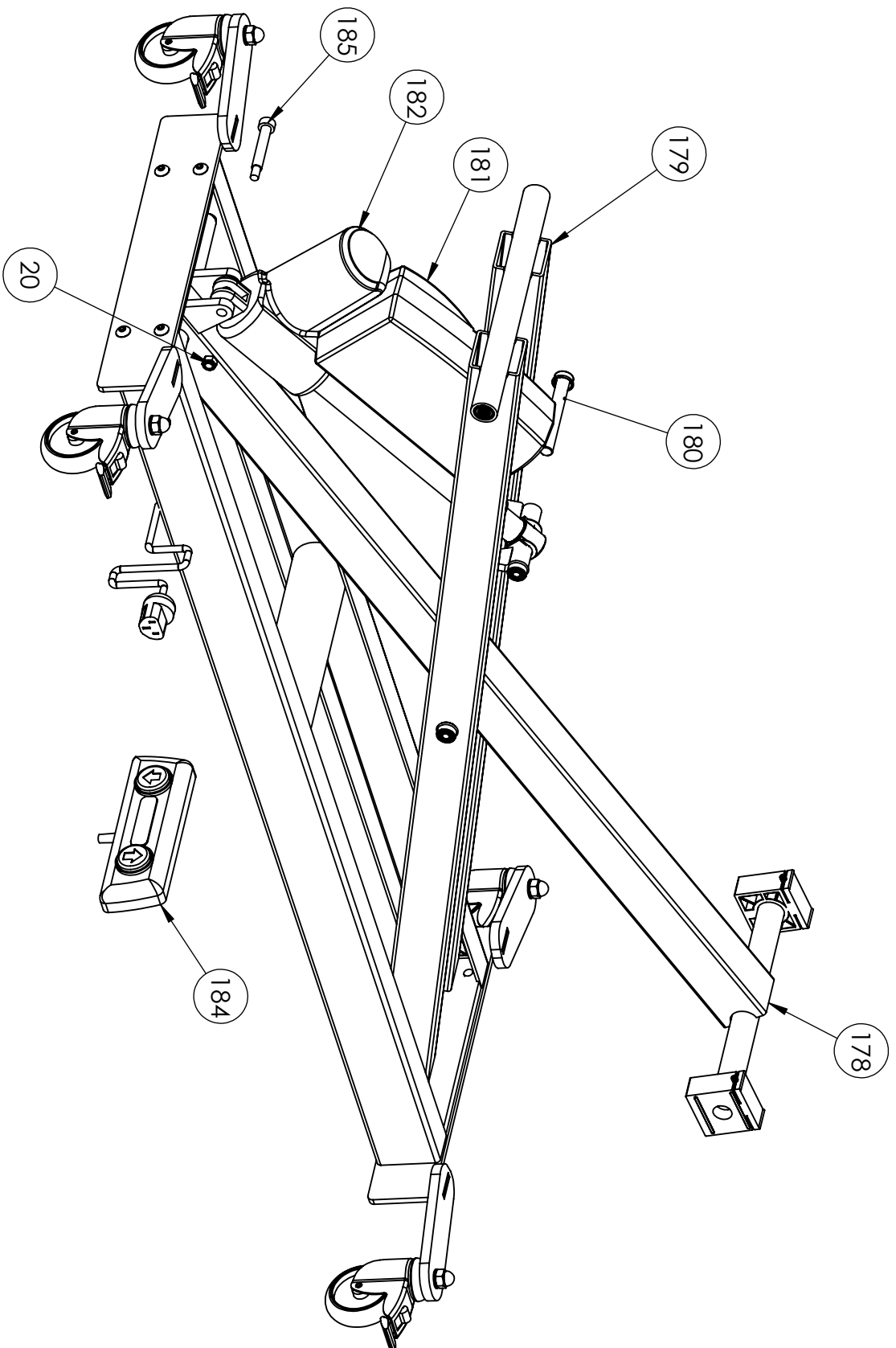
AM-SX BASE ONLY



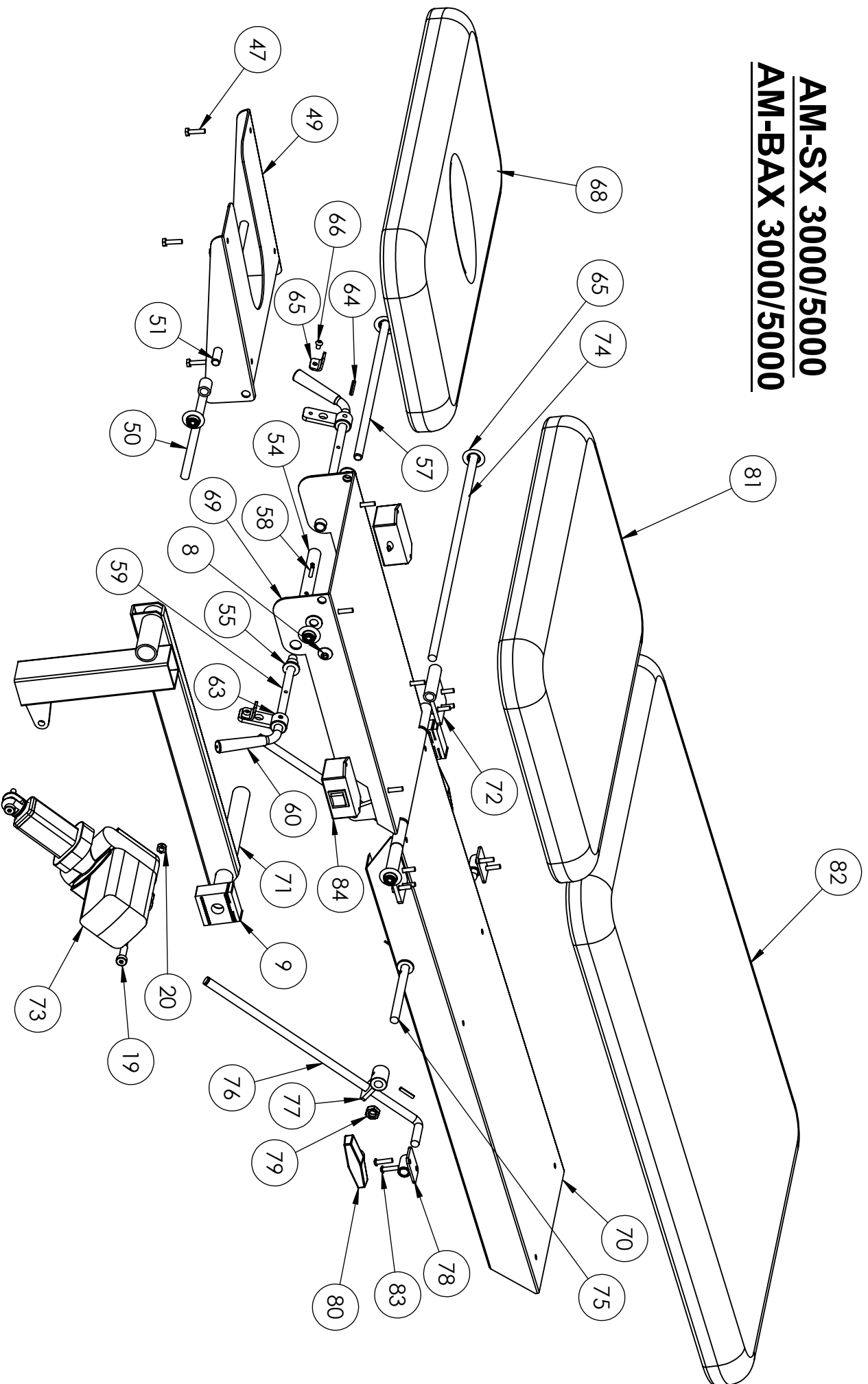
AM-BAX BASE BAR ACTIVATION OPTION



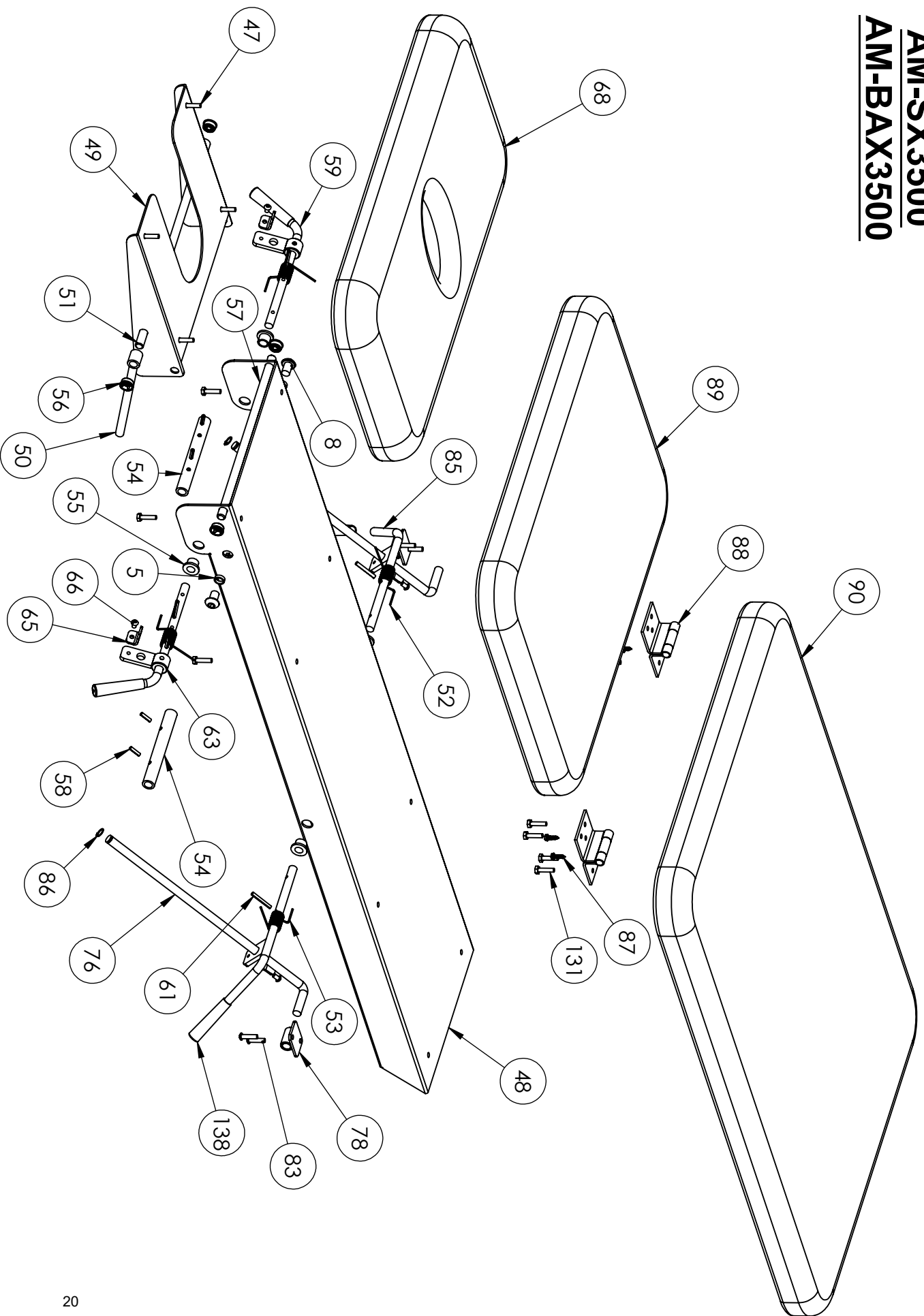
AM-SX BASE TIMOTION EQUIPPED



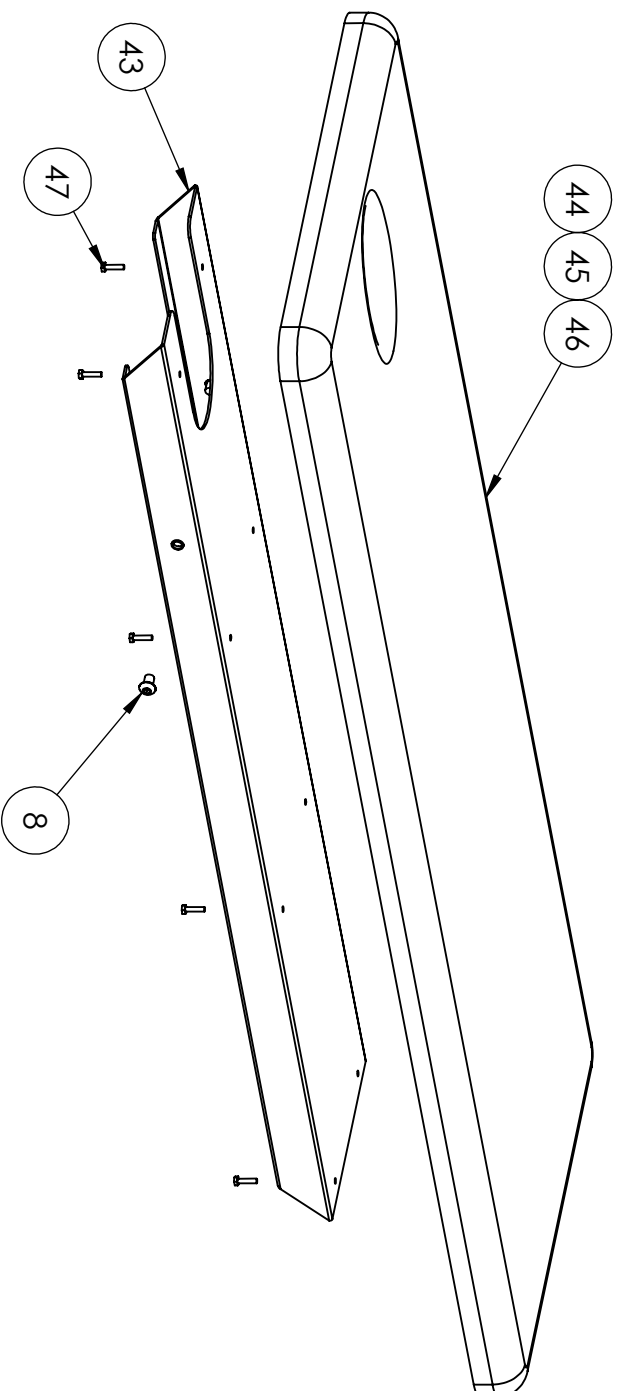
AM-SX 3000/5000 **AM-BAX 3000/5000**



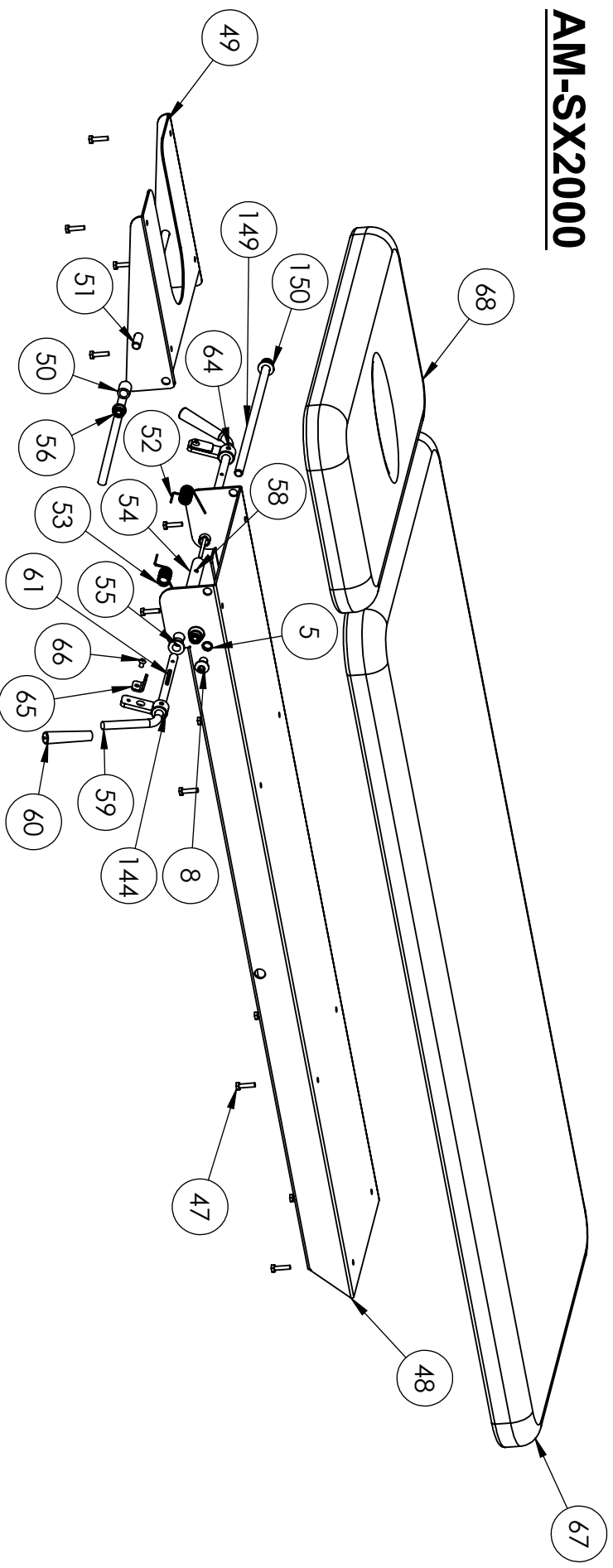
AM-SX3500 **AM-BAX3500**

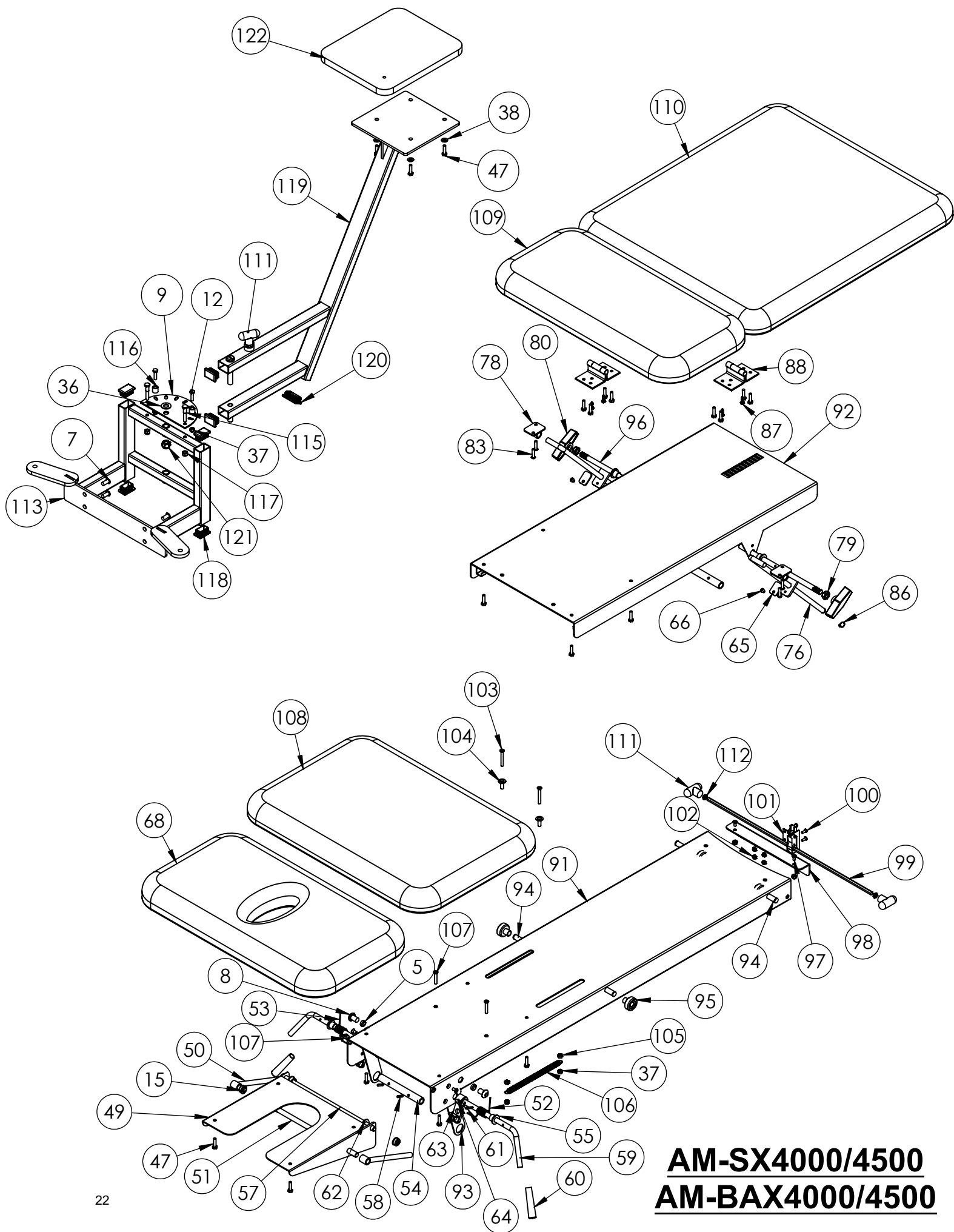


AM-SX1000
AM-SX1060
AM-SX1072



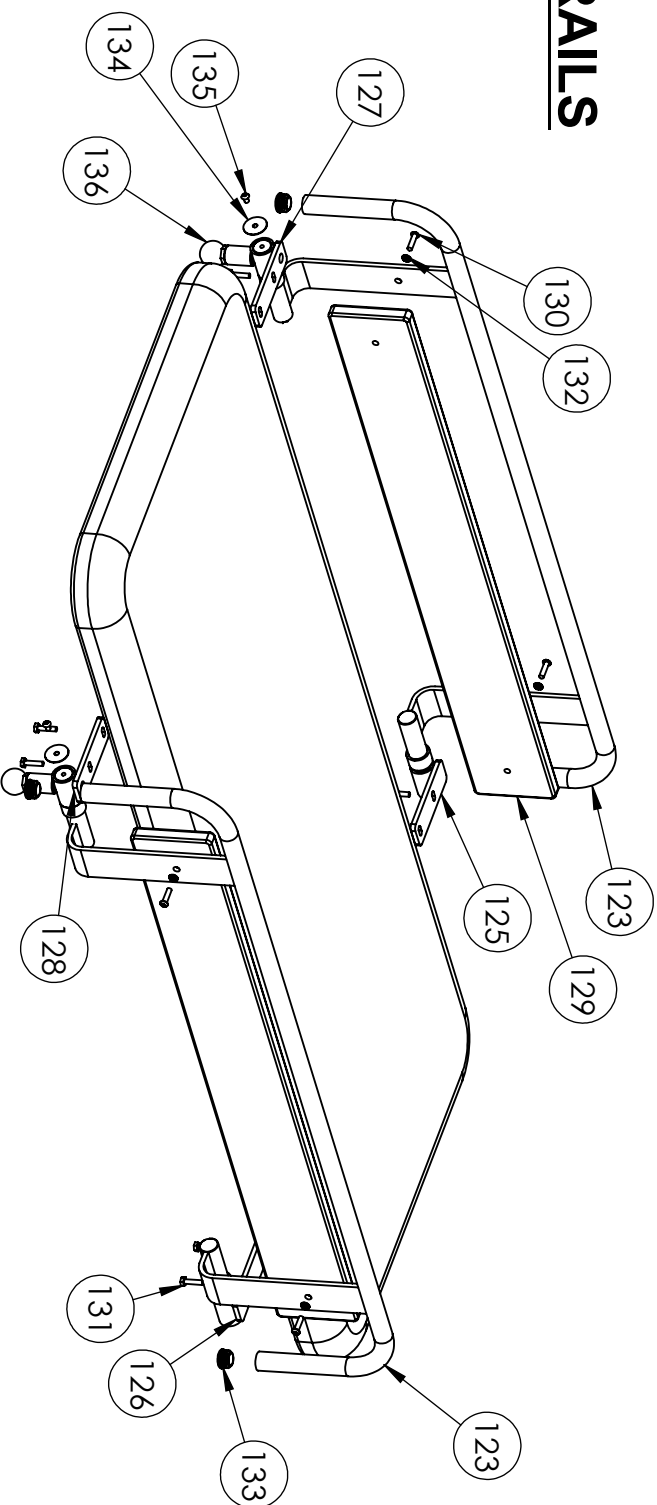
AM-SX2000



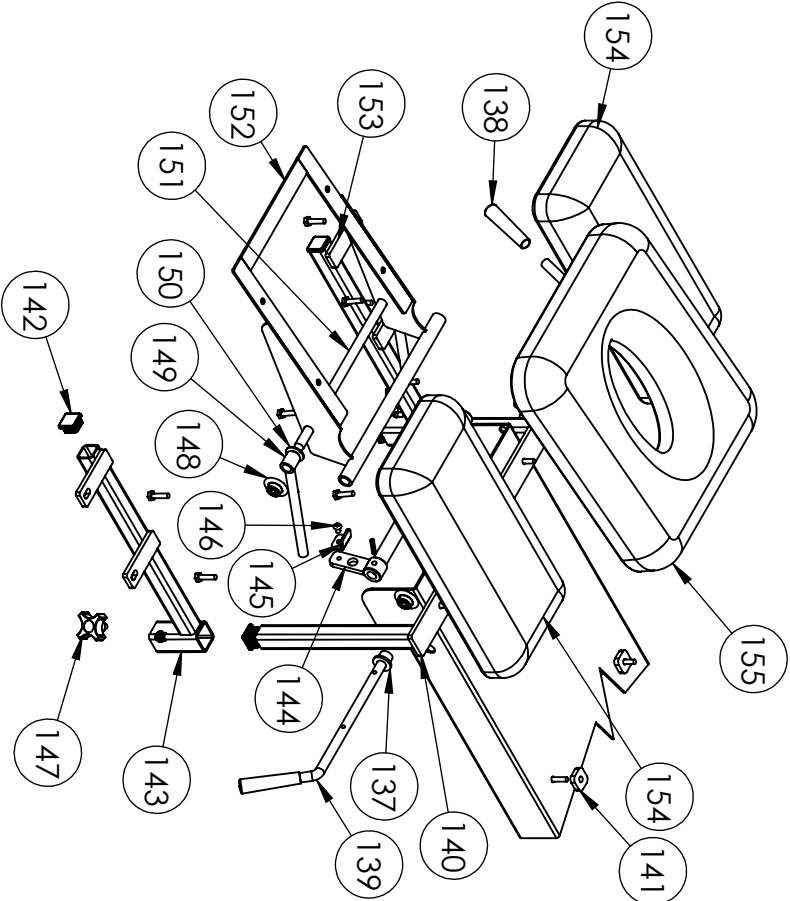


AM-SX4000/4500
AM-BAX4000/4500

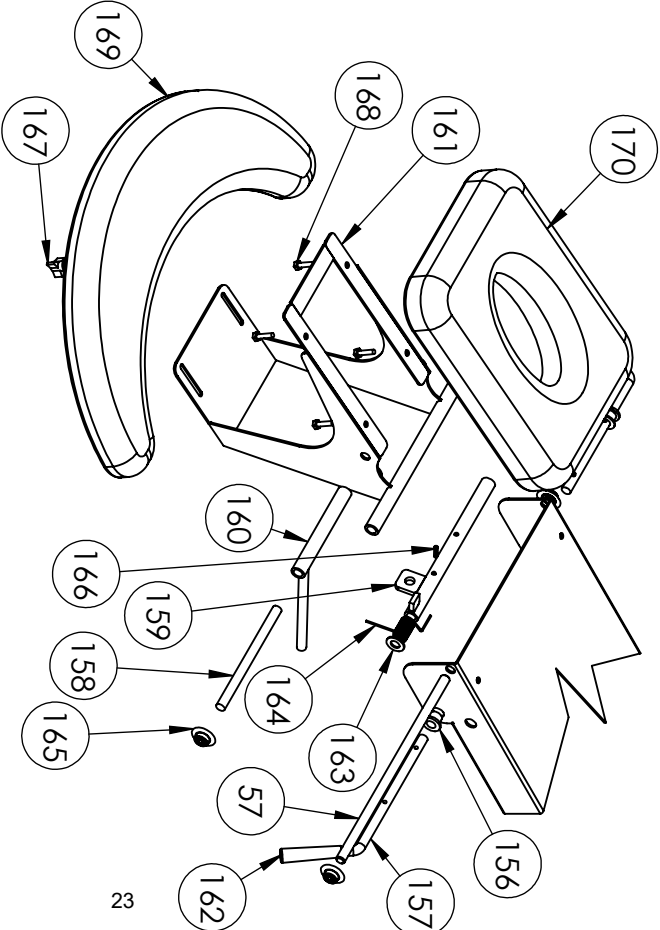
GUARD RAILS

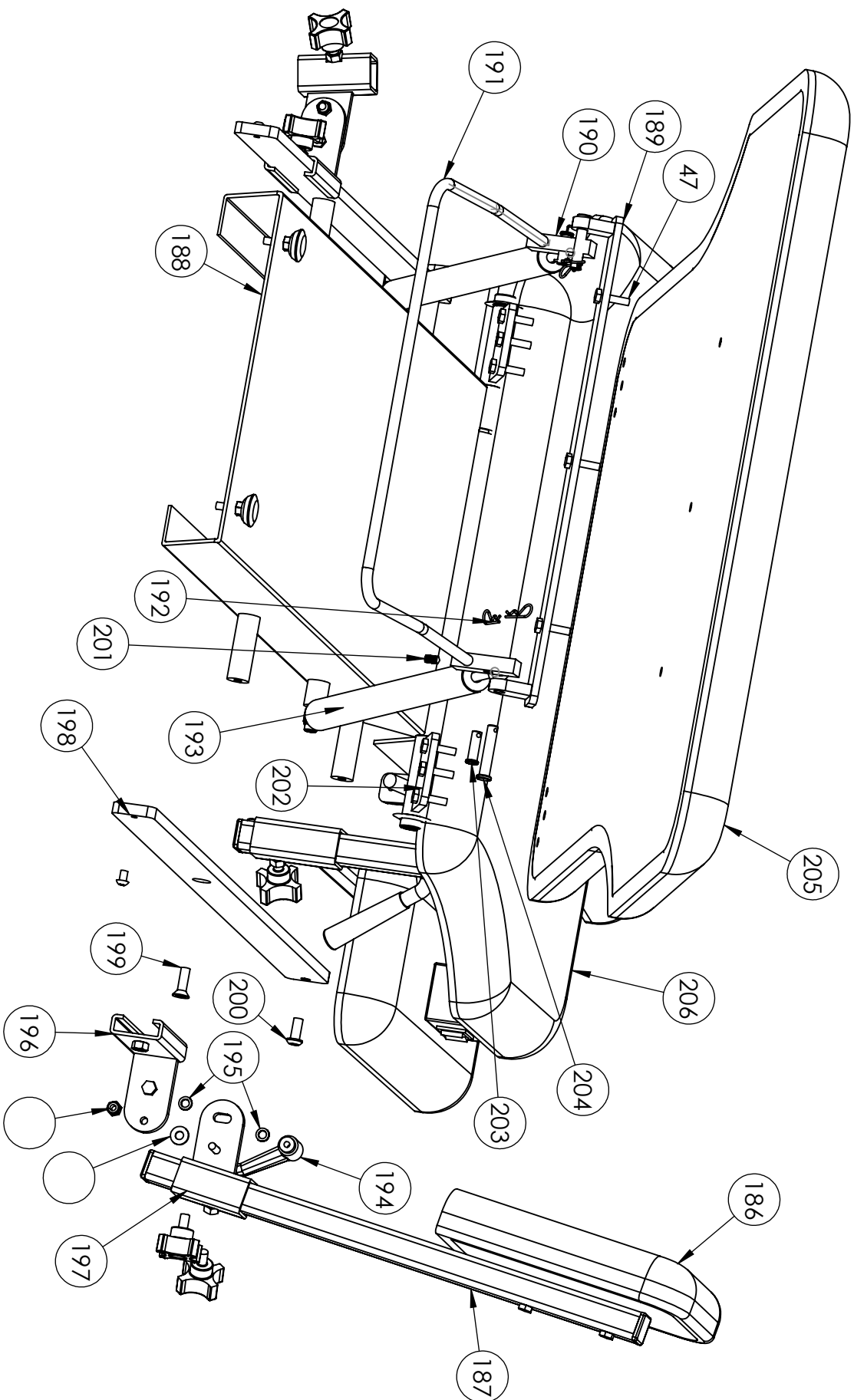


3-PIECE HEAD SECTION

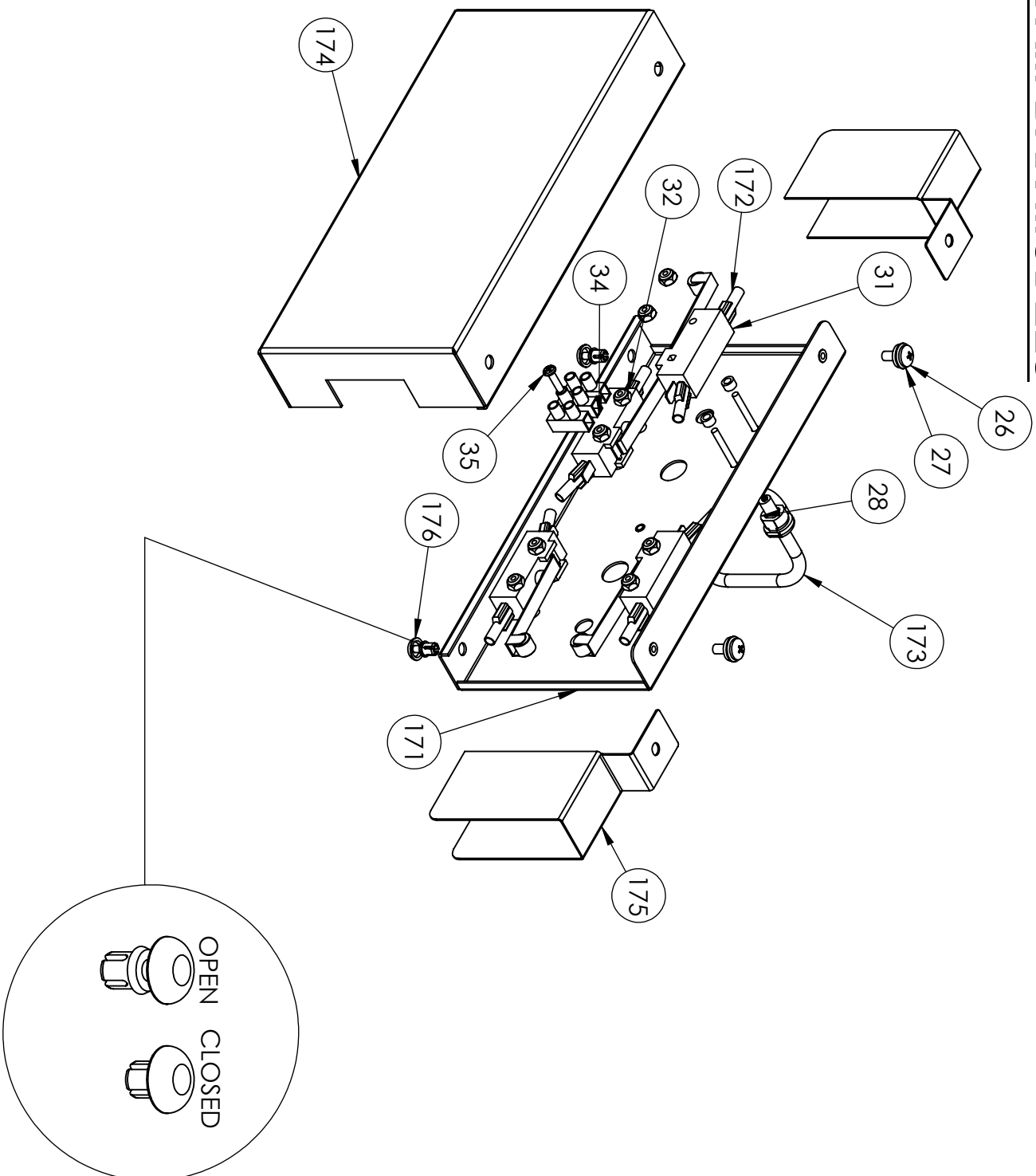


5400 CRESENT HEAD SECTION

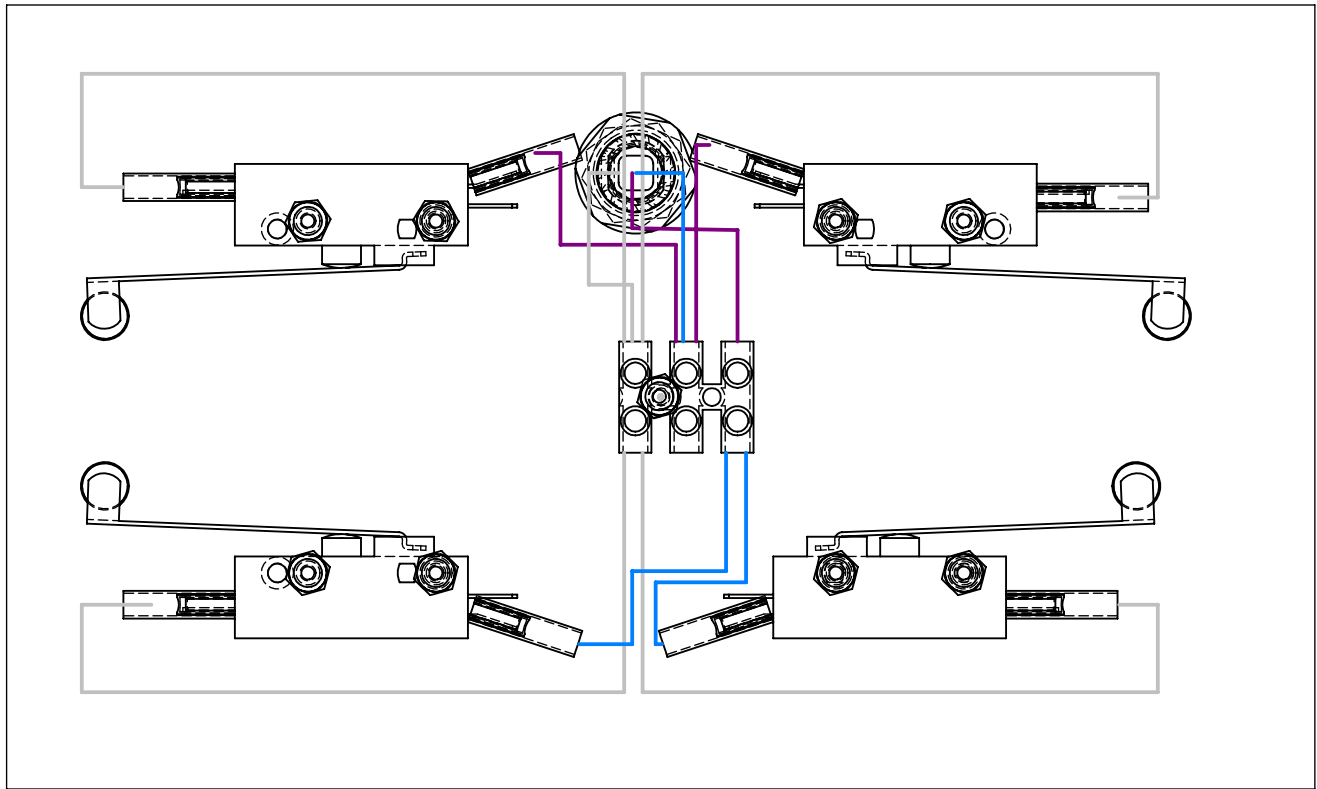




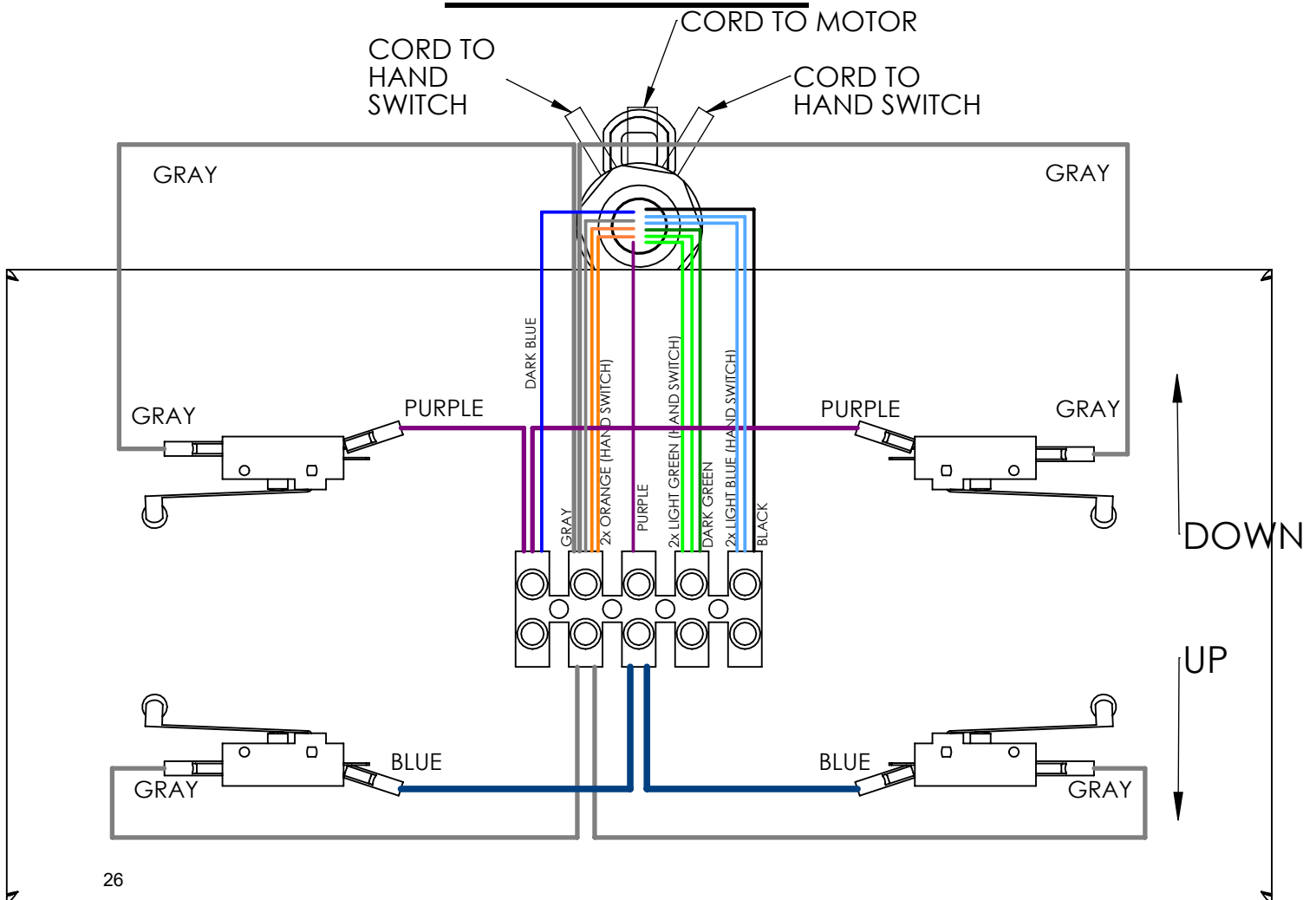
OPTIONAL BAR ACTIVATION SWITCH BOX **FOR AM-BAX MODELS**



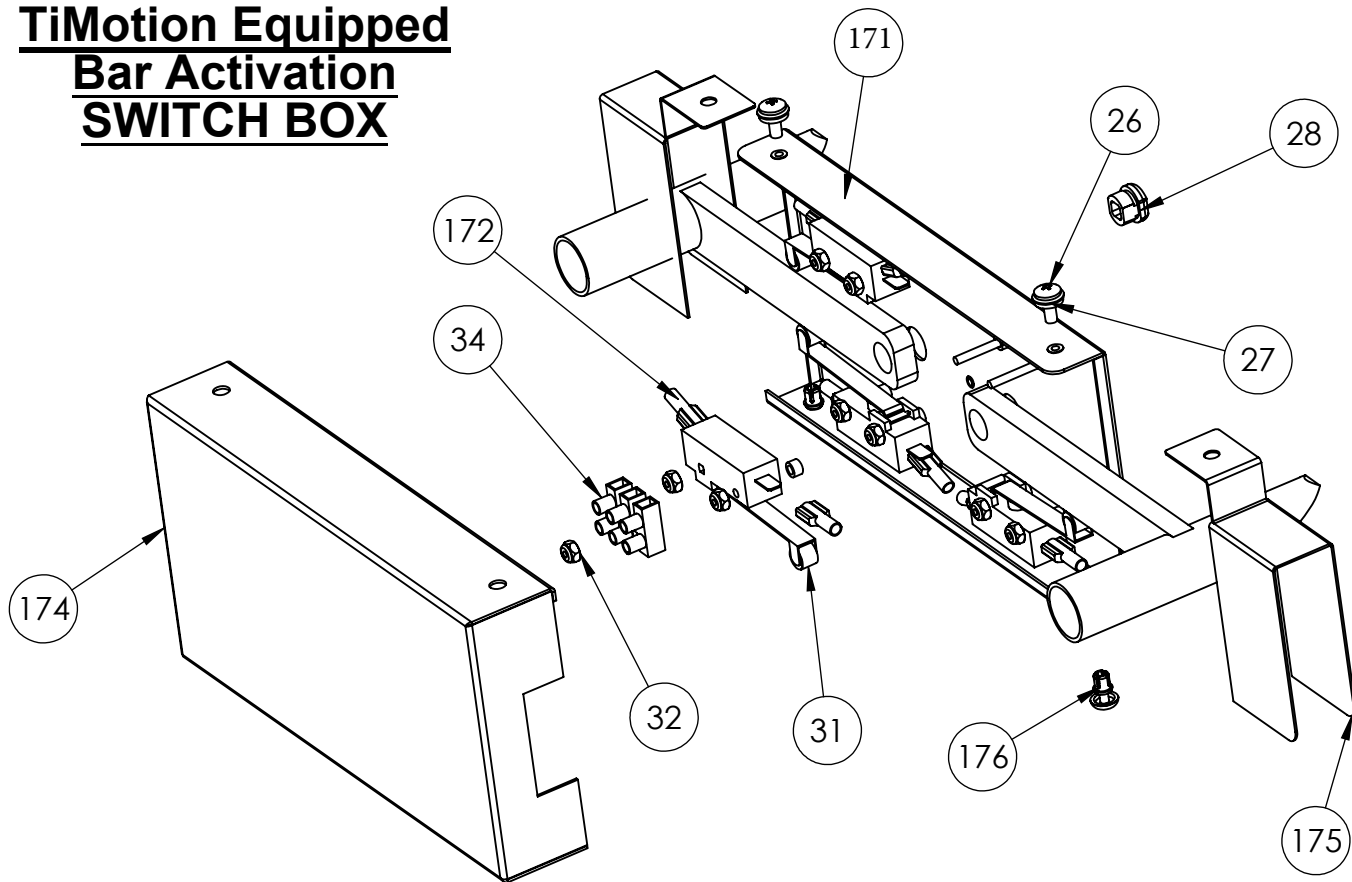
AM-BAX BAR ACTIVATION WIRING DIAGRAM



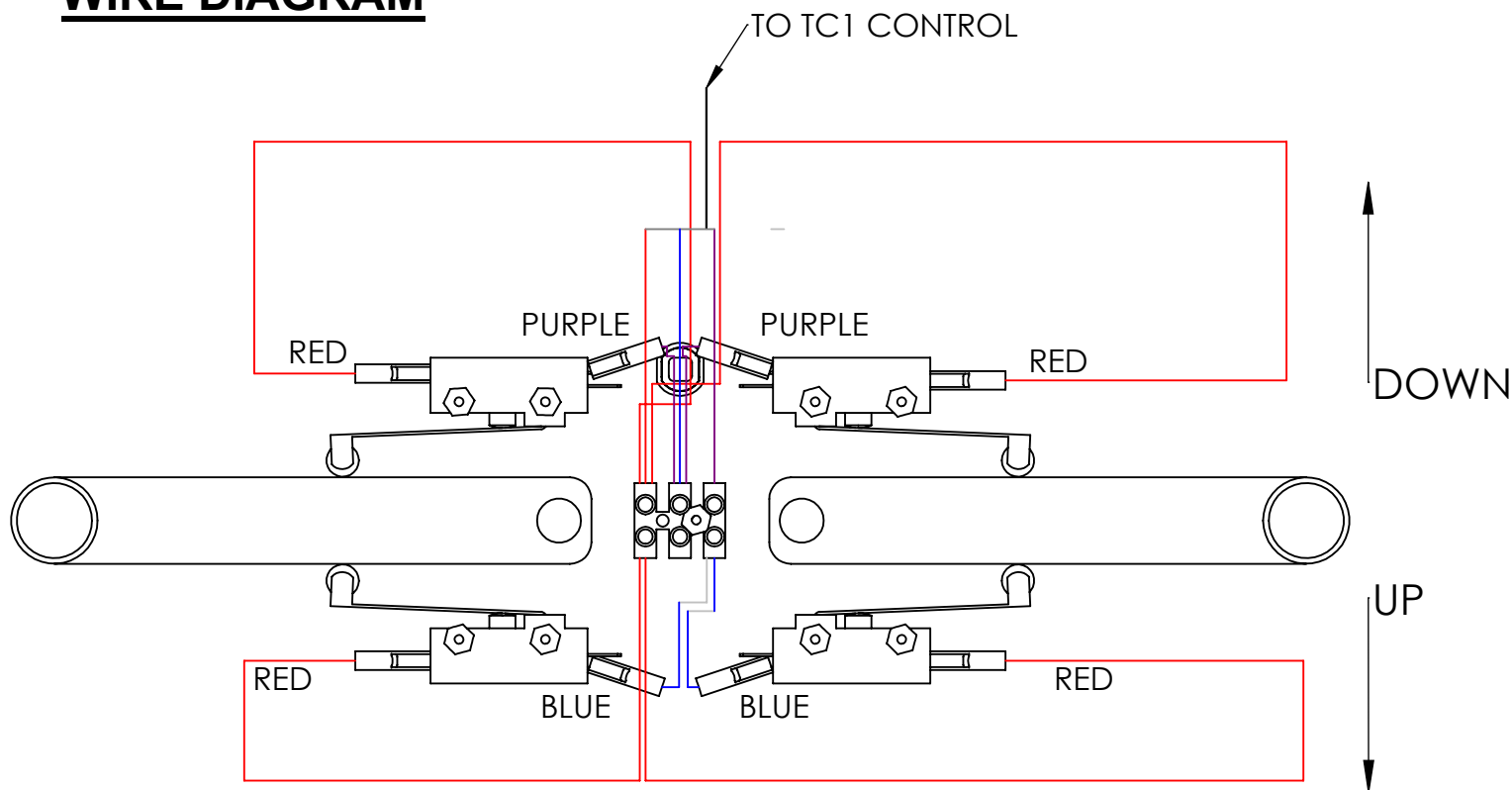
AM-BAX3000/5000



TiMotion Equipped
Bar Activation
SWITCH BOX



WIRE DIAGRAM



MAINTENANCE LOG

DATES	DESCRIPTION

NOTES

Armedica by Pivotal Health Solutions
LIMITED WARRANTY

Armedica by Pivotal Health Solutions warrants that the AMSX/AMBAX Series treatment tables are free from defects in material and workmanship. This warranty shall remain in effect for 18 months from the date of original consumer purchase of the product. If the product fails to function during the warranty period due to a defect in material or workmanship, Armedica by Pivotal Health Solutions, or the selling dealer, will repair or replace the table without charge within a 30-day period from the date on which the table is returned to Armedica by Pivotal Health Solutions or the selling dealer. Armedica by Pivotal Health Solutions has a policy of continuous improvement that may result in changes to specifications at any time.

THIS WARRANTY DOES NOT COVER






1. Replacement parts or labor furnished by anyone other than Armedica by Pivotal Health Solutions, selling dealer, or approved Armedica by Pivotal Health Solutions service agent.
2. Any failure of the table during the warranty period if the failure is not caused by a defect in material or workmanship or if the failure is caused by unreasonable use, including the failure to provide reasonable and necessary maintenance.

**ARMEDICA BY PIVOTAL HEALTH SOLUTIONS IS NOT LIABLE FOR INCIDENTAL
OR CONSEQUENTIAL DAMAGE TO PROPERTY OR BUSINESS.**

To obtain service under this warranty, please do the following:

1. A written claim should be sent to Armedica by Pivotal Health Solutions P.O. Box 880, Greenwood, AR 72936-0880 or the selling dealer.
2. The table must be returned to Armedica by Pivotal Health Solutions or the selling dealer.
3. This warranty gives you specific legal rights, and you may have other rights, which vary from state to state

Armedica by Pivotal Health Solutions does not authorize any person, or dealer, to create for it any other obligations or liabilities in connection with the sale of the tables. Any representation or agreement not contained in this warranty shall be void.

<p style="text-align: center;">CLASS I ELECTRICAL DEVICE IN RESPECT TO PROTECTION AGAINST ELECTRIC SHOCK Input: 100-240V~, 50-60Hz, 3.2A (PEAK), Duty Cyc: Int. On/Off 1 min./9 min.</p> <p style="text-align: center;">ARMEDICA MFG. TREATMENT TABLE Max. Load: 500lb. (181 kg.)</p> <table style="width: 100%;"><tr><td style="width: 33%;">Model No.</td><td style="width: 33%;">Serial No.</td><td style="width: 33%;">Prod. Date</td></tr><tr><td><input type="text"/></td><td><input type="text"/></td><td><input type="text"/></td></tr></table> <p style="font-size: small;">ARMEDICA MFG. 212 BELL RD, GREENWOOD, ARKANSAS, 72936 P.N. 300000 CUSTOMER SERVICE (479) 996-2612</p> <div style="display: flex; justify-content: space-between; align-items: center;"><div style="text-align: center;"><p>Medical Electrical Equipment This device has been tested to and is in accordance with the standards outlined in IEC 60601-1</p></div><div style="text-align: center;"><p>CLASSIFIED cULus 3JF7 E233290</p></div></div>	Model No.	Serial No.	Prod. Date	<input type="text"/>	<input type="text"/>	<input type="text"/>	<p style="text-align: center;">CLASS II ELECTRICAL DEVICE IN RESPECT TO PROTECTION AGAINST ELECTRIC SHOCK INPUT: 120V~, 50/60Hz, 5,000mA, DUTY Cyc: Int. On/Off 1min/9min</p> <p style="text-align: center;">ARMEDICA MFG. CORP. Maximum Load: 400Lbs (181kg.)</p> <table style="width: 100%;"><tr><td style="width: 33%;">Model No.</td><td style="width: 33%;">Serial No.</td><td style="width: 33%;">Prod. Date</td></tr><tr><td><input type="text"/></td><td><input type="text"/></td><td><input type="text"/></td></tr></table> <p style="font-size: small;">063388 ARMEDICA MFG. 212 BELL RD, GREENWOOD, AR 72936 CUSTOMER SERVICE (479) 996-2612</p> <div style="display: flex; justify-content: space-between; align-items: center;"><div style="text-align: center;"><p>Medical Electrical Equipment with respect to electrical shock, fire, and mechanical hazards only, in accordance to 60601-1</p></div><div style="text-align: center;"><p>CLASSIFIED cULus 3JF7 E233290</p></div><div style="text-align: center;"></div></div>	Model No.	Serial No.	Prod. Date	<input type="text"/>	<input type="text"/>	<input type="text"/>
Model No.	Serial No.	Prod. Date											
<input type="text"/>	<input type="text"/>	<input type="text"/>											
Model No.	Serial No.	Prod. Date											
<input type="text"/>	<input type="text"/>	<input type="text"/>											