



**This manual has been prepared for the owners and operators of the ARMEDICA™ AM-SP Series Hi-Lo Treatment Tables, and contains installation instructions, precautionary instructions and maintenance procedures for the following model numbers:**

**AM-SP100, AM-SP200, AM-SP202,  
AM-SP300, AM-SP350, AM-SP400,  
AM-SP450, AM-SP500, AM-SP550**



**ISO 13485**  
FM 50089

**Made in the U.S.A**

## **AM-SP SERIES HI-LO TREATMENT TABLES**

*Armedica Treatment Tables are intended to be used as physical therapy supports for patients during clinician attended physical therapy related diagnosis, treatment, and monitoring. The table is equipped with a vertical table height adjustment actuator and casters for mobile transport. Patients are not to be left unattended.*

### **INSTALLATION**

1. Remove all packaging material from the tables.
2. There is no assembly required on the ARMEDICA™ AM-SP SERIES HI-LO Treatment Tables.
3. Plug the power cord into a properly grounded 120 Volt AC outlet and follow the procedure outlined in the Precautionary Instructions.
4. The tables are equipped with retractable leveling glides to be used where necessary to achieve maximum stability.

### **PRECAUTIONARY INSTRUCTIONS**

1. Read, understand and practice the precautionary instructions in this manual. Know the limitations and hazards associated with ARMEDICA™ AM-SP Series Treatment Tables.
2. Always make certain leveling glides are locked in the down position prior to patient use.
3. The motor is double insulated for protection from EMI. This equipment has been tested and found to comply with the limits for medical devices to the IEC 60601-1-2: Third edition 2007-03. These limits are designed to provide reasonable protection against harmful interference in a typical medical installation. This equipment generates, uses and can radiate radio frequency energy and, if not installed and used in accordance with the instructions, may cause harmful interference to other devices in the vicinity. However, there is no guarantee that interference will not occur in a particular installation. If this equipment does cause harmful interference to other devices, which can be determined by turning the equipment off and on, the user is encouraged to try to correct the interference by one or more of the following measures:
  - Reorient or relocate the receiving device.
  - Increase the separation between the equipment.
  - Connect the equipment into an outlet on a circuit different from that to which the other device(s) are connected.
  - Consult the manufacturer or field service technician for assistance.
4. Always use both hands when changing the angle of any section of the table.
5. Never change the angle of any section when the patient's weight is on that section.
6. Never place your hands or feet nor the patient's hands or feet near any of the working mechanisms of the table when raising or lowering the table.

### **OPERATING INSTRUCTIONS**

To adjust the height of ARMEDICA™ AM-SP Series Treatment Tables, a low voltage hand switch or foot switch is used to activate the electric motor assembly. The up or down motion is clearly indicated by arrows.

The motors are equipped with a thermal cutout that protects them from overheating.

Duty cycle on/off Int. 1 min./ 9 min.

### **TABLE SECTION ADJUSTMENTS**

The sections of the ARMEDICA™ AM-SP Series Treatment Tables are raised by lifting them with both hands. The locking mechanism holds them securely at any angle. To lower a section, hold it in one hand and release the locking mechanism by turning the knob with the other.

- On the AM-SP300 AND AM-SP500, the spring-loaded lock must be released before the center section can be raised.
- On the AM-SP400 and AM-SP450, rotate the knob to the unlocked position to allow the lumbar section to roll.
- To adjust the armrests on the 3-piece Head Section, use two hands placed on each end and pull out to the side; then raise or lower them into the desired, slotted position and release.

**CAUTION:** When lowering any of the table sections, make certain your hands are placed where they cannot come in contact with the board supports.

**CAUTION:** When adjusting the sections with the patient on the table, make certain the patient's weight is not on the section you are going to adjust.

**CAUTION:** When the center section is lowered make certain the lock is properly engaged.

### **TABLE SECTION ADJUSTMENTS CONT.**

**CAUTION:** Make certain both armrests on the 3-piece head section are locked securely in position before the patient places any weight on them.

**CAUTION:** The lumbar section on the AM-SP400 and the AM-SP450 should remain in the locked position unless traction is being applied.

### **MAINTENANCE**

The ARMEDICA™ AM-SP Series HI-LO Treatment Tables are equipped with a maintenance free electric motor.

The moving parts of the table should have a drop of oil placed on them approximately every six months.

Frequently check to make certain that all hardware (nuts, bolts, etc.) are properly adjusted and securely fastened.

In the event it becomes necessary to replace the hand switch, foot switch or the power cord, make certain that the plug is inserted properly and the locking tabs on the Control Box(61) snap into place.

The upholstery should be cleaned with mild soap and water and the table frame wiped with a dry cloth to remove dust and lint when necessary.

**CAUTION:** Do not use products containing bleach, petroleum, or citrus.

### **SYMBOLS AND INDICATORS**



Attention: Consult accompanying documents.



Type B Equipment: "An adequate degree of protection against electric shock is provided, particularly regarding leakage currents and reliability of the protective earth connection."



The grounding pin located on the power supply cable is for functional use only, and is present for EMI/ EMC purposes. The motor is Class II equipment and does not rely on this grounding means for safety.

### **TROUBLESHOOTING**

#### **MOTOR DOESN'T WORK.**

- A. Check to see if motor is plugged into the electrical outlet, and the power cord is properly plugged into the motor.
- B. Make sure the electrical outlet is getting power.
- C. Check hand switch or foot switch to be sure it is securely plugged in.
- D. Thermal cutout may have activated. Allow the motor to cool.
- E. In the event there is a failure of the motor, the motor must be returned to Armedica Mfg. Corp. Only the manufacturer can service the motor.

### **MOTOR SPECIFICATIONS**

Ewellix, Olney, Illinois 62450 Model  
TLG10-AA310  
Rated Voltage and Frequency 120V  
60HZ. Current 2.5 Amps.  
UL CORD SET 140-355  
Duty cycle: on/off Int. 1 min. / 9 min.

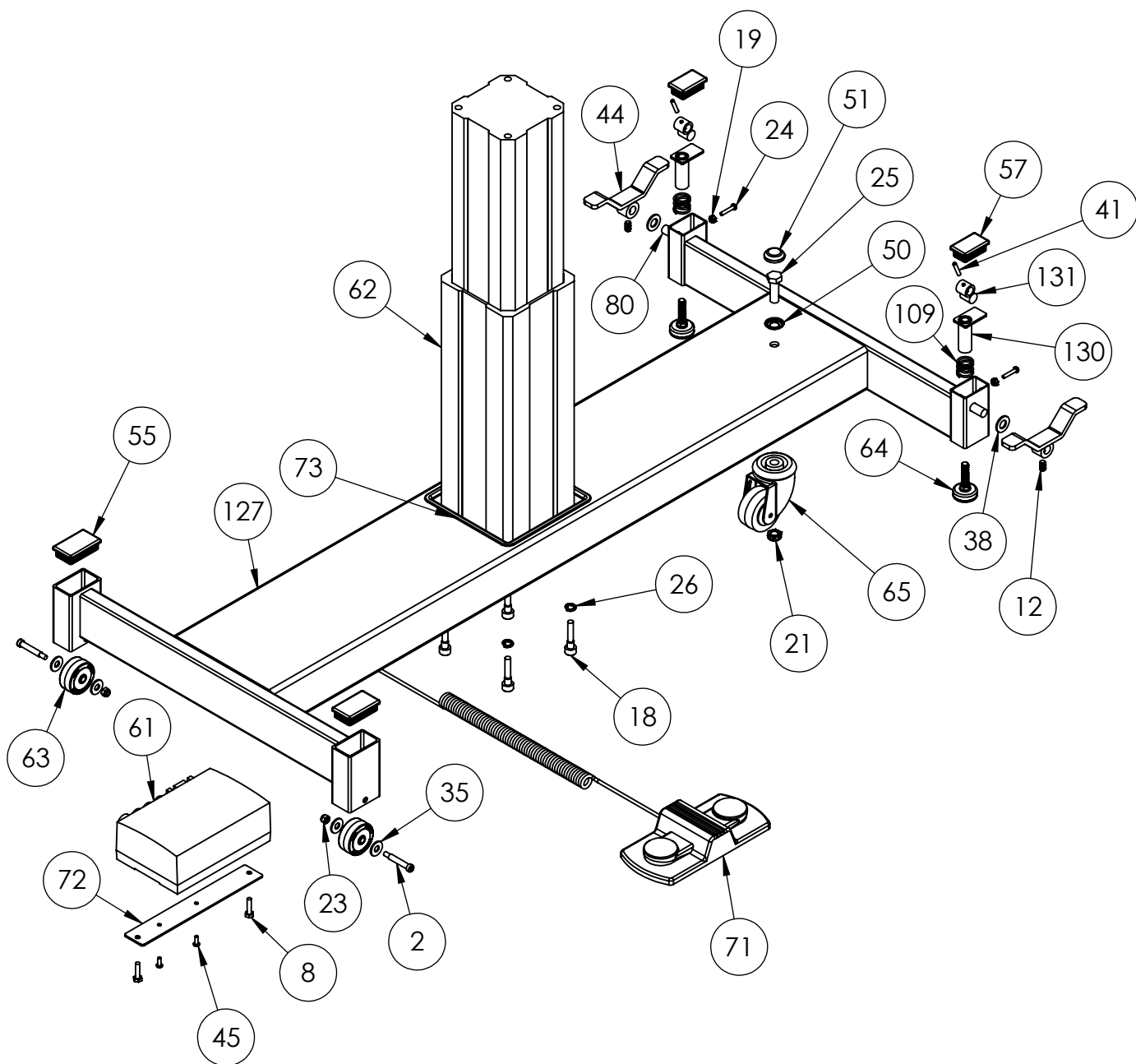
### **Transport and Storage**

Ambient Temperature: -20 to 70deg. C  
Relative Humidity: 10 to 100%, including condensation.  
Atmospheric Pressure: 500hPa to 1030hPa

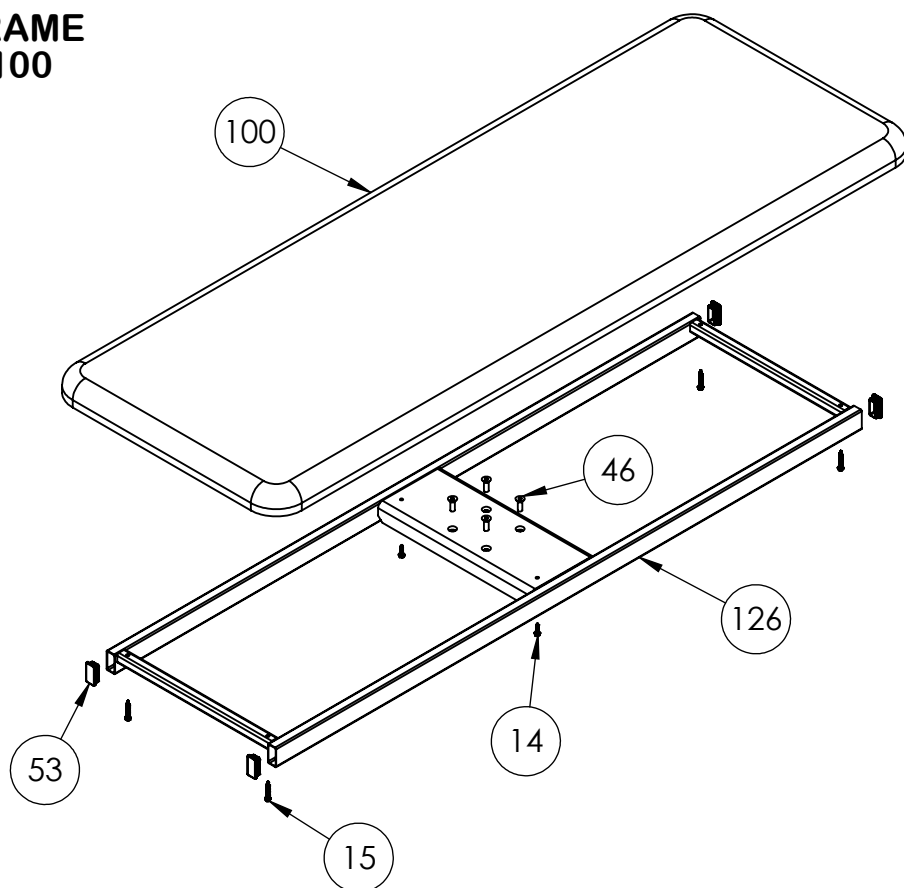
**TABLE LIFTING CAPACITY: 400 lb. (181 KILOGRAMS)**

ITEM NO.	PART NO.	SP SERIES PARTS LIST  DESCRIPTION	QUANTITY					
			100	200	202	300	350	400
				250		500	550	450
1	02005	SHOULDER BOLT 5/16x3/4		2	2	6	2	4
2	02010	SHOULDER BOLT 5/16x1/2	2	2	2	2	2	2
3	02030	CARRIAGE BOLT 1/4-20x2				1		
4	02035	BUTTON HEAD SOCKET SCREW 5/16-18x1-1/2		2	2	6	4	4
5	02037	BUTTON HEAD SOCKET SCREW 1/4-20x1						1
6	02042	BUTTON HEAD SCREW 1/4-20x1/2		2		2	2	
7	02044	HEX HEAD CAP SCREW 1/4-20x1-1/4		4		4	4	
8	02045	HEX HEAD CAP SCREW 1/4- 20x1				1		14
9	02050	HEX HEAD CAP SCREW 5/16-18x1-3/4						2
10	02053	HEX HEAD CAP SCREW 1/4-20x1-1/2						2
11	02054	HEX HEAD CAP SCREW 1/4-20x1-3/4						4
12	02058	CONE POINT SET SCREW 5/16-18x3/8	2	2	2	2	2	2
13	02064	HEX HEAD CAP SCREW 1/4-20x2						4
14	02065	HEX WASHER HEAD SCREW #14x1	2	4	4	14	14	8
15	02070	HEX WASHER HEAD SCREW #14x1-3/4	4	2				
16	02073	FLAT HEAD PHILLIPS SCREW 1/4-20x1-1/2						1
17	02075	HEX WASHER HEAD SCREW #14x2-1/2		4	6			
18	02079	SOCKET HEAD CAP SCREW M10X45	4	4	4	4	4	4
19	02089	NYLOCK NUT 10-32	2	2	2	2	2	3
20	02090	NYLOCK NUT 1/2-13						1
21	02095	NYLOCK JAM NUT 1/2-13	1	3	3	4	3	5
22	02099	PAN HEAD PHILLIPS SCREW 10-32x1-1/4						1
23	02100	NYLOCK NUT 1/4-20	2	4	4	9	6	9
24	02101	PAN HEAD PHILLIPS SCREW 10-32x1	2	2	2	2	2	3
25	02102	HEX HEAD CAP SCREW 1/2-13x1-1/2	1	3	3	3	3	3
26	02103	HIGH COLLAR LOCK WASHER M10	4	4	4	4	4	4
27	02105	NYLOCK NUT 5/16-18		2	2	6	4	6
28	02097	NUT 10-32						2
29	02120	FINISHED HEX NUT 1/4-20				5		
30	02162	PLASTIC SPACER .33 IDx.565 ODx.56					2	2
31	02135	FINISHED JAM HEX NUT 1/2-13		2	2	7	4	4
32	02140	WASHER 1/4						4
33	02143	FENDER WASHER 1/4"IDx1"OD		2		2	2	2
34	02145	WASHER 1/2				1		
35	02150	WASHER 5/16	4	14	14	6	6	10
36	02188	SHOULDER BOLT 5/16x1-1/4					2	
37	02160	NYLON WASHER 5/16 ID		4	4	10	8	8
38	02165	NYLON WASHER 1/2 ID	2	2	2	3	2	7
39	02166	NYLON SPACER 1-1/4ODx17/64IDx3/4		6	6			
40	02168	NYLON SPACER .980 ODx.352 IDx1/2						2
41	02170	SPRING PIN 3/16x1	2	4	4	8	6	8
42	02175	SPRING PIN 1/4x1-1/2		2		2	2	2
43	03073	PULL KNOB 1/2-13 ID		2		2	2	2
44	18606	BAR 1/4x1x7 SP GLIDE PEDAL PLTD	2	2	2	2	2	2
45	02078	SCREW PAN HD PHIL 10-32x3/8	2	2	2	2	2	2
46	02546	FLAT HEAD SOCKET SCREW M10X45	4	4	4	4	4	4
47	03005	PLUG 1/2x1		4		4	4	4
48	03008	PLUG 1x1-1/2						4
49	03010	PLUG 1x1						2
50	03011	WASHER RHW-207 FINISH CAP	1	3	3	3	3	3
51	03012	CAP FINISH BLACK BOLT COVER	1	3	3	3	3	3
52	03013	BLACK PLASTIC TUBE CAP .312x4						2
53	03015	PLUG 1x2x14GA	4	4	4	4	4	7
54	03019	BLACK CAP 3/8				2		
55	03020	PLUG 1-1/2x2-1/2x11GA	2	2	2	2	2	2
56	03025	TORSION SPRING RIGHT HOOK				2	1	1
57	03026	PLUG 1-1/4x2x10-14 RIBBED INSERT	2	2	2	2	2	2
58	03030	TORSION SPRING LESS BEND RIGHT		1	1	1	1	1
59	03035	TORSION SPRING LEFT HOOK				2	1	1
60	03040	TORSION SPRING LESS BEND LEFT		1	1	1	1	1
61	03238	POWER SPPLY BCU53 120V BCP11	1	1	1	1	1	1
62	03246	MOTOR COLMN TLG10 24VDC DIN8	1	1	1	1	1	1
63	03055	WHEEL 1-2-411 SER 2 X 7/8	2	2	2	2	2	2
64	03060	GLIDE 3/8-16x1-1/2	2	2	2	2	2	2
65	03064	CASTER 2-1/2X1-1/4" SWIVEL	1	1	1	1	1	1
66	03065	GLIDE 1/4-20x1				4	2	
67	03066	KILLIAN F300 BEARING						4

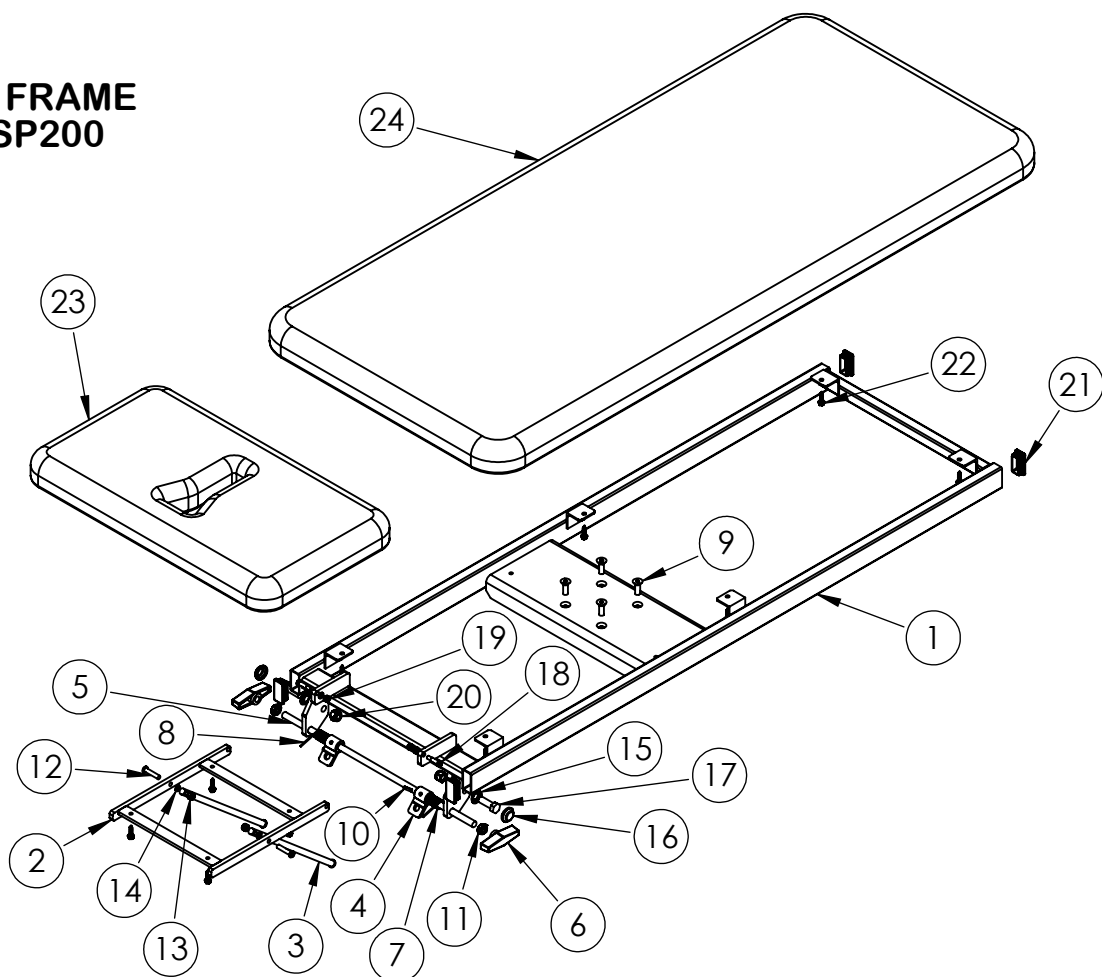
ITEM NO.	PART NO.	SP SERIES PARTS LIST  DESCRIPTION	QUANTITY					
			100	200	202	300	350	400
				250		500	550	450
68	03070	WING KNOB 1/2X13 ID		2	2	6	4	4
69	03095	SPRING M30 EXTENSION				1		
70	03096	SPRING M52		2		2	2	2
71	03118	FOOT SWITCH BCU CONTROL	1	1	1	1	1	1
72	12081	BAR 1/8x1-1/2x9-3/4 BCU MNT PLTD	1	1	1	1	1	1
73	03110	TRIM RUBBER x1004	1	1	1	1	1	1
74	03125	KNOB "T" SPRNG LOAD PULL PIN 1/4DIA						1
75	12511	STRAP HOOK 400						2
76	12519	GEAR RACK PLUNGER LOCK						1
77	12527	LOCK PULLER						1
78	12537	STAND MOUNT SUPPORT PLATE						1
79	12751	STAND LOCK PLATE						1
80	13011	ROD 1/2x25-5/8 SP CSTR ACTVT PLTD	1	1	1	1	1	1
81	13016	ROD 1/2x21 THD'D HD SEC LOCK PLTD		1	1	1	1	1
82	13021	THREADED ROD 1/2x23 CENTER SECTION				1		
83	13026	THREADED ROD 1/2x23 FOOT SECTION				1	1	
84	13095	SPACER .913ODx.635 IDx.641 WHT PLAS		2	2	2	2	2
85	13504	THREADED ROD 17-1/4 FT SECTION LOCK-400						1
86	13521	THREADED CAM LOCK BAR						1
87	13526	CAM LOCK						1
88	14501	AM-400 UPHOLSTERED THORACIC BOARD						1
89	14502	AM-400 UPHOLSTERED LUMBAR BOARD						1
90	14503	AM-400 UPHOLSTERED FOOT BOARD						1
91	14508	ADAPTER BOARD						1
92	14800	UPHOLSTERED ARMREST RIGHT		1		1	1	1
93	14801	UPHOLSTERED ARMREST LEFT		1		1	1	1
94	14802	UPHOLSTERED HEAD BOARD 500		1		1	1	1
95	14820	BD UPH 202 BODY PRE NATAL			1			
96	14812	UPHOLSTERED HEAD BOARD		1		1	1	1
97	14813	UPHOLSTERED CENTER BOARD 27"				1	1	
98	14814	UPHOLSTERED FOOT BOARD 27"				1	1	
99	14826	200 UPHOLSTERED BOARD BODY 27"		1				
100	14827	UPHOLSTERED BOARD 100 TOP 27"	1					
101	18115	HEAD SECTION FRAME PAINTED		1	1	1	1	1
102	18117	CENTER SECTION FRAME 300				1		
103	18925	FRAME FOOT SECTION RR PNTD				1	1	
104	18127	SUPPORT BRACKET LOCK		2	2	6	4	4
105	18144	CENTER SECTION LOCK BAR 300				1		
106	18150	HEAD SECTION FRAME 3PC HD		1		1	1	1
107	18152	ARMREST BRACKET LEFT		1		1	1	1
108	18154	ARMREST BRACKET RIGHT		1		1	1	1
109	02558	GLIDE LEVEL COMPRESSION SPRING	2	2	2	2	2	2
110	18452	ROD 1/2x18 FOOT SPPT PLTD				2	2	
111	18446	HEAD SECTION SUPPORT ROD 1/2x11-11/16		2	2	2	2	2
112	18448	CENTER SECTION SUPPORT ROD 1/2x8-11/16				2		
113	18452	FOOT SECTION SUPPORT ROD 1/2x18						2
114	18506	AM-400 FOOT SECTION FRAME						1
115	18516	HANDLE LOCK RELEASE 400 RIGHT						1
116	18522	HANDLE LOCK RELEASE 400 LEFT						1
117	18544	SP400 GEAR RACK BAR						1
118	18549	BASE TUBE SP400 WLD MNT PNTD						1
119	18551	SP400 ROLLER FRAME						1
120	18555	FRAME TOP SP400 PNTD						1
121	18494	STAND MACHINE PIVOT BC PAINTED						1
122	18908	BRKT MACH STND MNT SP PNTD						1
123	18561	SP300 TOP FRAME PAINTD				1		
124	18566	SP 350 TOP FRAME PAINTED					1	
125	18568	SP 200 TOP FRAME PAINTED		1				
126	18570	SP 100 TOP FRAME PAINTED	1					
127	18630	BASE TUBE SP300 WELDMENT PAINTED	1	1	1	1	1	
128	18749	FRM HD SEC PRE NATAL PNTD			1			
130	18602	TUBE 3/4ODx2-1/16 SP LEVELER PLTD	2	2	2	2	2	2
131	18604	BAR RD 5/8x3/4 SP CSTR CAM PLTD	2	2	2	2	2	2
132	14834	BD UPH 202 PRENATAL HD SEC			1			
133	14849	BD UPH SP-202 BDY PLUG			1			



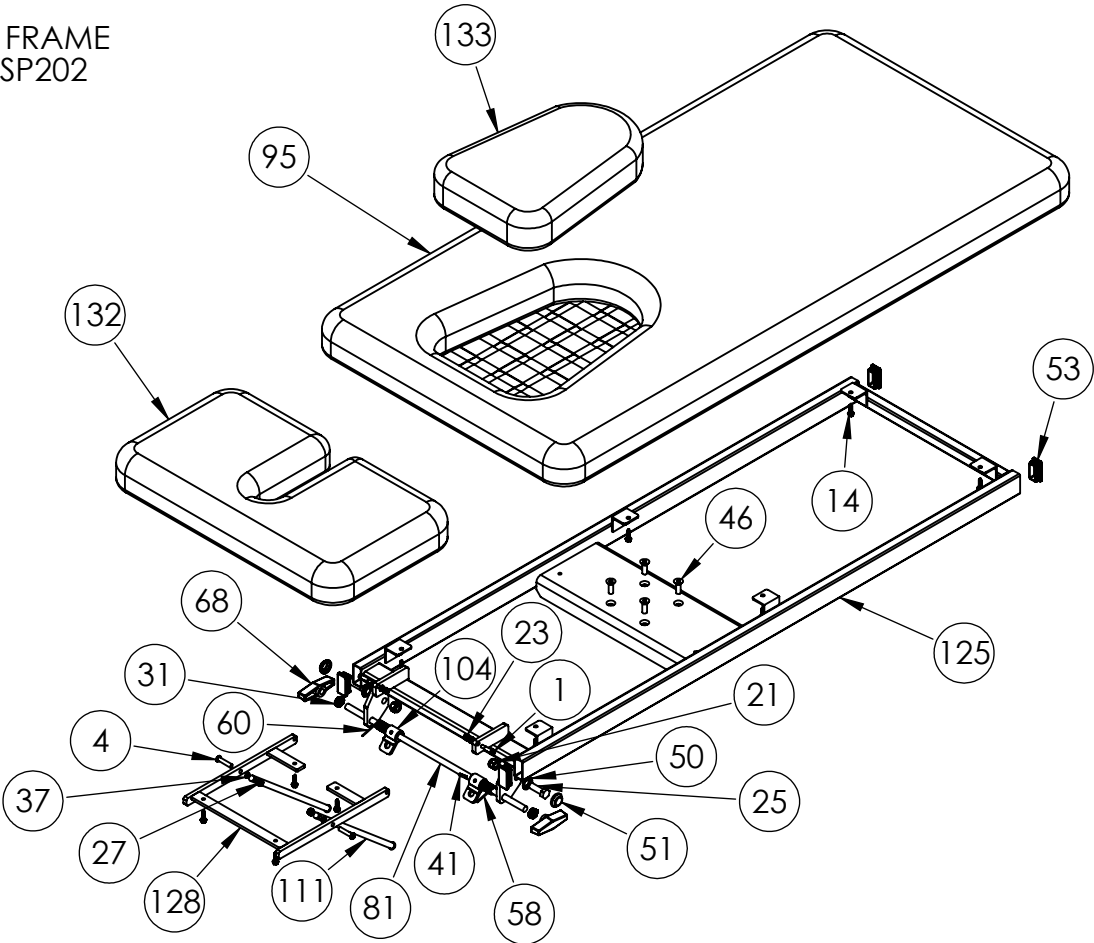
## TOP FRAME AM-SP100



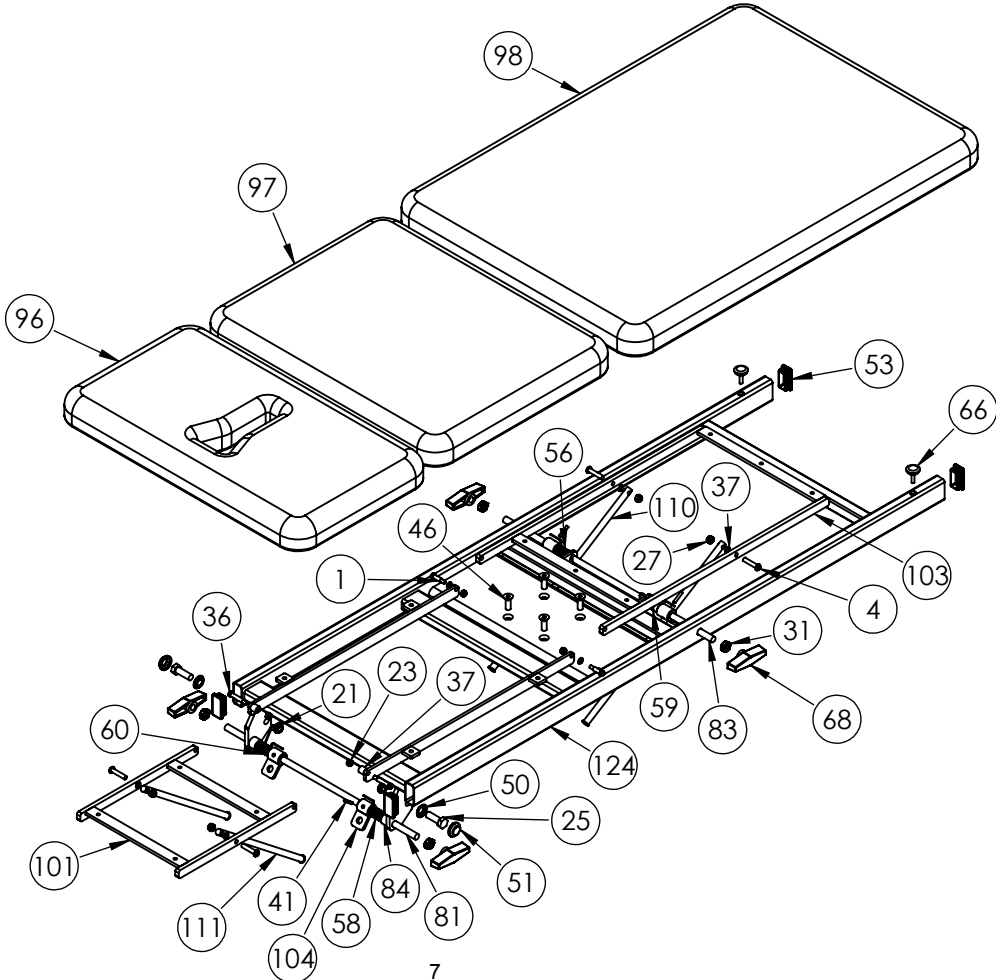
## TOP FRAME AM-SP200



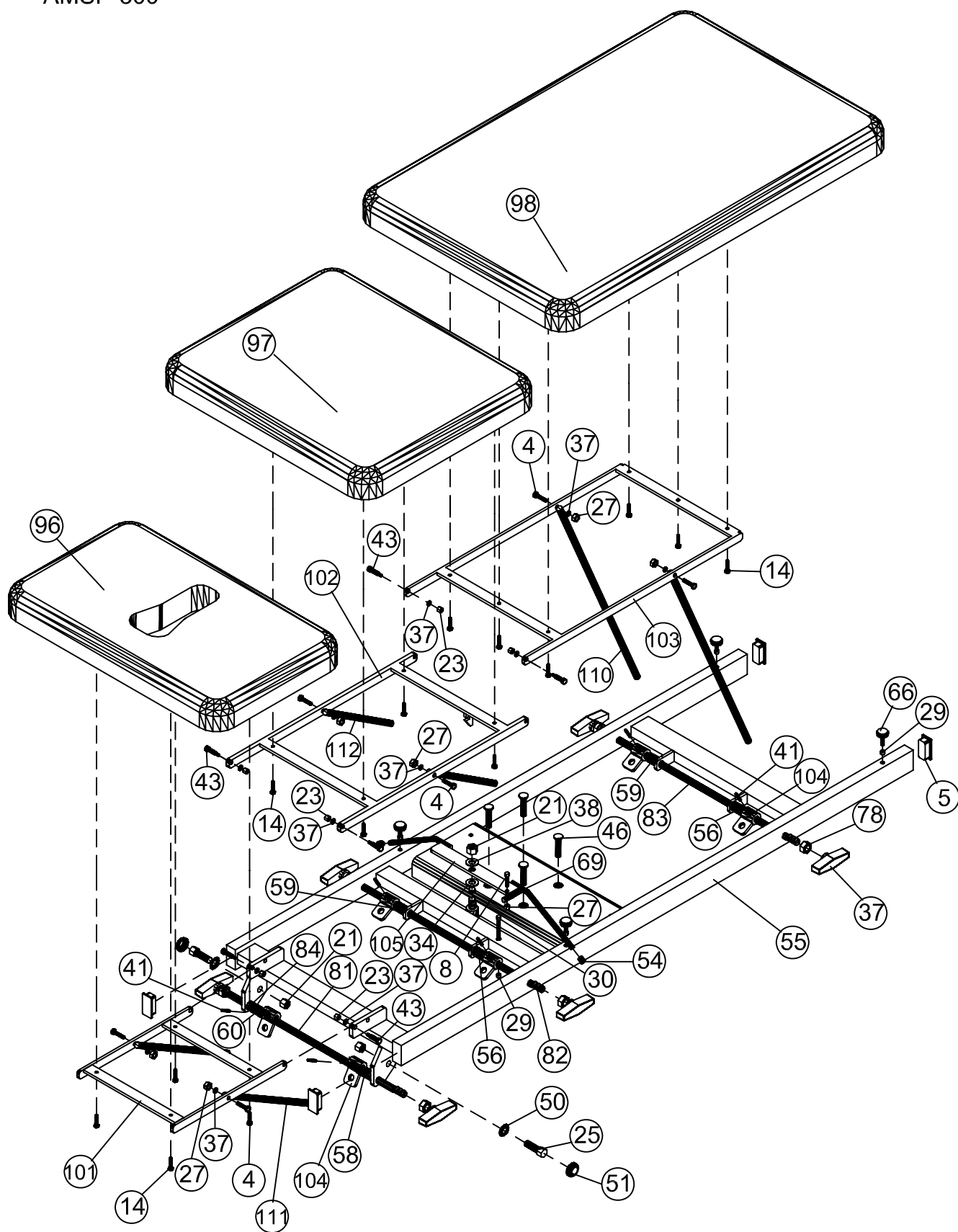
TOP FRAME  
AM-SP202



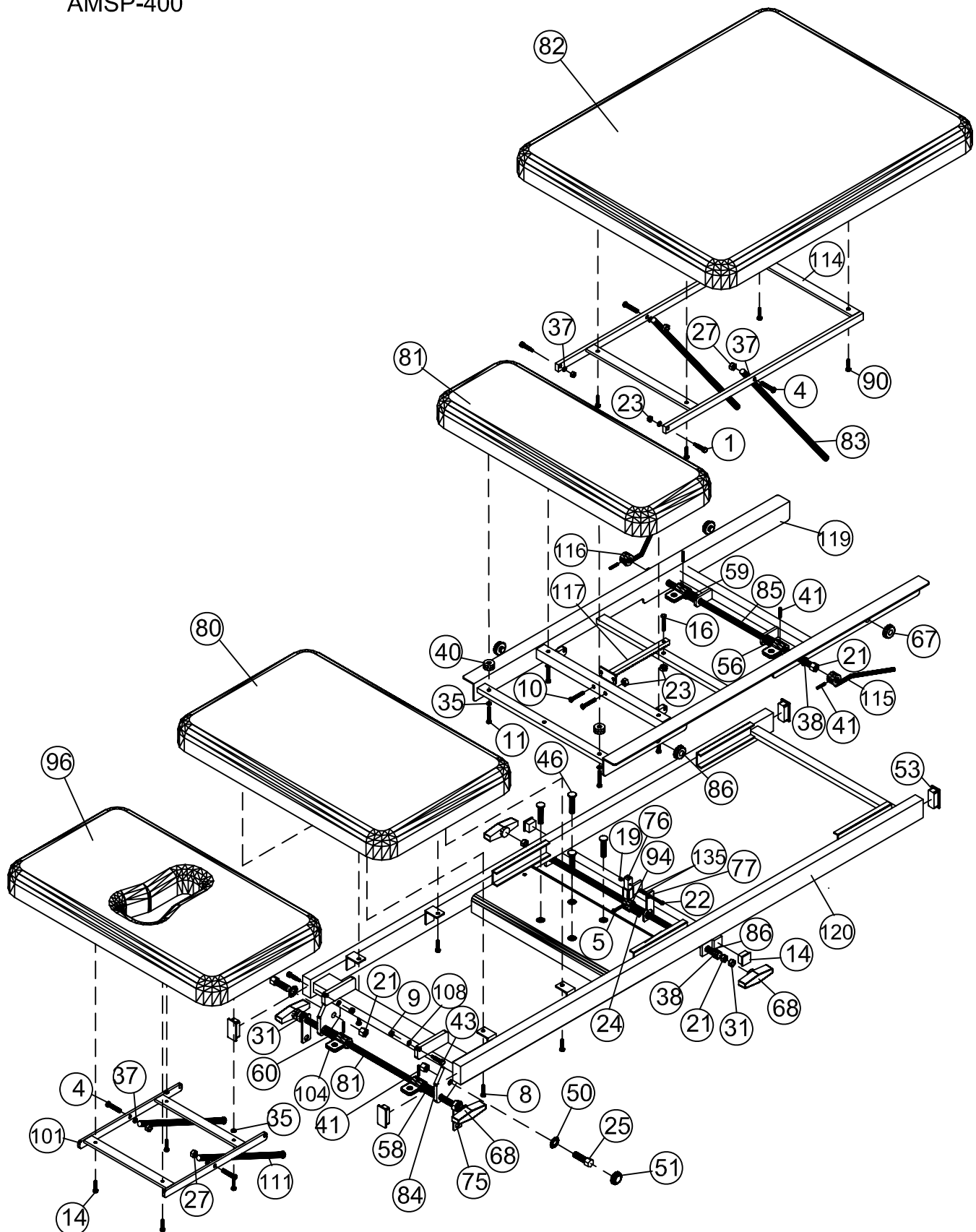
TOP FRAME  
AM-SP350



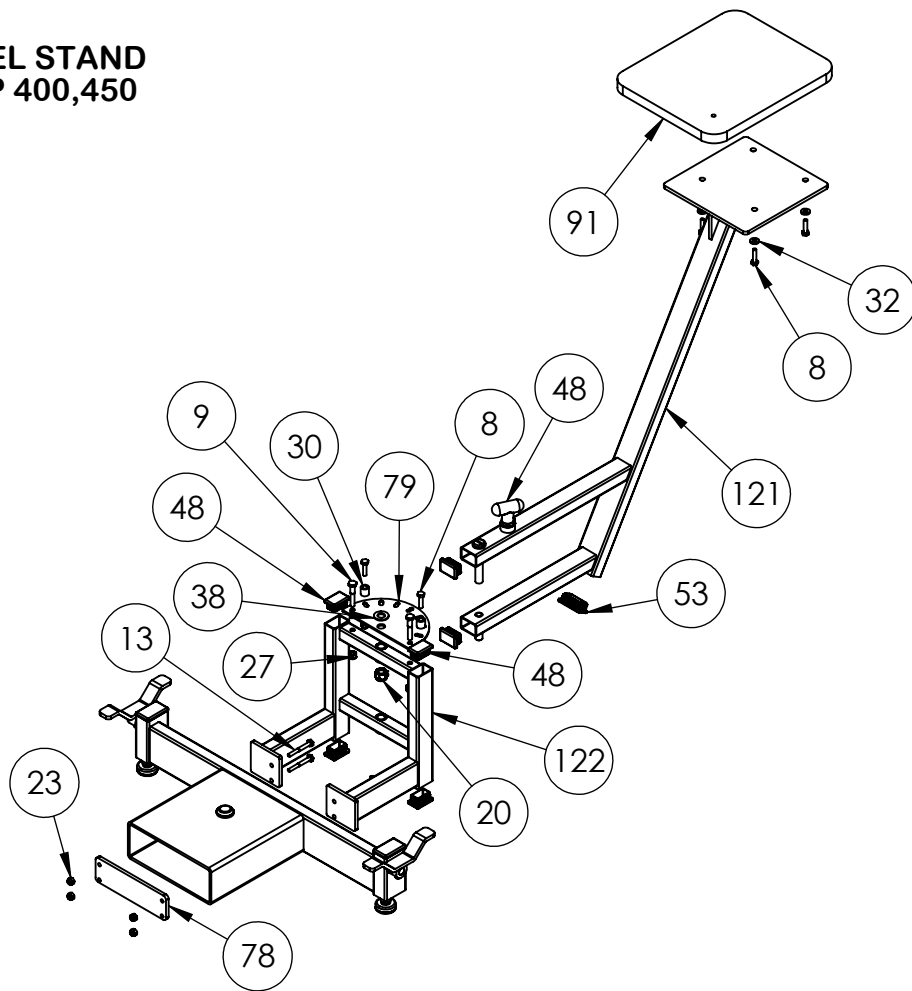
TOP FRAME  
AMSP-300



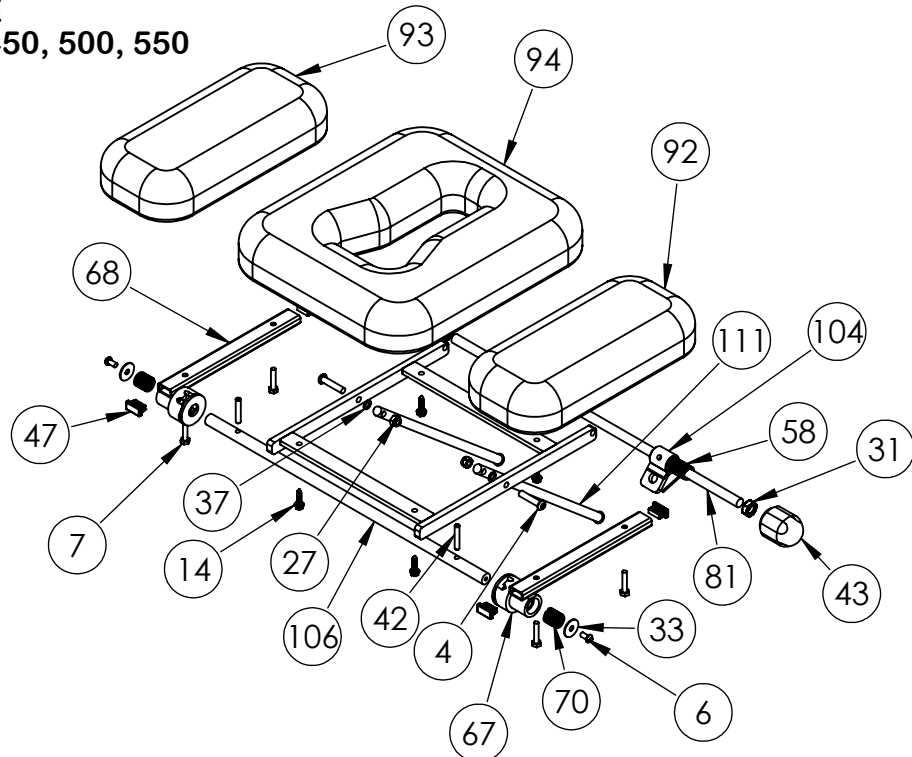
TOP FRAME  
AMSP-400



**SWIVEL STAND  
AM-SP 400,450**



**HEAD PIECE  
AM-SP250, 450, 500, 550**



**ARMEDICA™ MANUFACTURING CORP.**  
**LIMITED WARRANTY**

ARMEDICA™ Manufacturing Corp. warrants that the AM-SP Series treatment tables are free from defects in material and workmanship. This warranty shall remain in effect for 18 months from the date of original shipment of the product. If the product fails to function during the warranty period due to a defect in material or workmanship, ARMEDICA™ Manufacturing Corp. or the selling dealer will repair or replace the table without charge within a 30 day period from the date on which the table is returned to ARMEDICA™ Manufacturing Corp. or the selling dealer. ARMEDICA™ Manufacturing Corp. has a policy of continuous improvement that may result in changes to specifications at any time.

**THIS WARRANTY DOES NOT COVER**

1. Replacement parts or labor furnished by anyone other than ARMEDICA™, selling dealer or approved ARMEDICA™ service agent.
2. Any failure of the table during the warranty period if the failure is not caused by a defect in material or workmanship or if the failure is caused by unreasonable use, including the failure to provide reasonable and necessary maintenance.
3. Use of cleaning solutions other than soap and water, use of massage oil or excessive heat.

ARMEDICA™ MANUFACTURING CORP. IS NOT LIABLE FOR INCIDENTAL  
OR CONSEQUENTIAL DAMAGE TO PROPERTY OR BUSINESS.

To obtain service under this warranty, please do the following:

1. A written claim should be sent to ARMEDICA™ Manufacturing Corp., P.O. Box 880, Greenwood, AR. 72936-0880 or the selling dealer.
2. The table must be returned to ARMEDICA™ Manufacturing Corp. or the selling dealer.
3. This warranty gives you specific legal rights and you may have other rights, which vary from state to state.

ARMEDICA™ does not authorize any person or dealer to create for it any other obligations or liabilities in connection with the sale of these tables. Any representation or agreement not contained in this warranty shall be void.

<b>CLASS II ELECTRICAL DEVICE</b> <b>IN RESPECT TO PROTECTION AGAINST ELECTRIC SHOCK</b> INPUT: 120V~, 60Hz, 2.5A, DUTY Cyc: Int. On/Off 1min/9min <b>ARMEDICA MFG. CORP.</b> Maximum Load: 400Lbs (182Kg.)		
Model No.	Serial No.	Prod. Date
<small>ARMEDICA MFG. 212 BELL RD, GREENWOOD, AR 72936 CUSTOMER SERVICE (479) 996-2612</small>		
<b>Medical Electrical Equipment</b> with respect to electrical shock, fire, and mechanical hazards only, in accordance to 60601-1		
		